

LEA Name : Fairfield Area SD
Address : 4840 Fairfield Rd
Fairfield, PA 17320

County : Adams
AUN Number : 112013054
LEA Type : SD

Annual Financial Report Accuracy Certification Statement

For Fiscal Year Ending

6/30/2020

Pennsylvania Department of Education

&

Office of Comptroller Operations

PDE-2056: Intermediate Unit

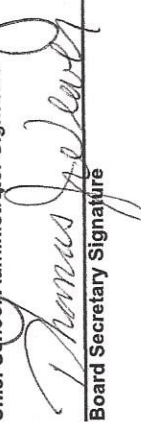
PDE-2057: School District, AVTS/CTC, Charter School,
and Special Program Jointure

CERTIFICATION: By signing this page I agree that the electronic data submitted is a complete and accurate statement of the financial operations and status of the local education agency for the fiscal year. It has been prepared in accordance with generally accepted accounting principles and established Commonwealth of PA reporting guidelines.


Chief School Administrator Signature

Date

12/30/2021


Board Secretary Signature

Date

12/30/2021

LuAnne Keebaugh

(717)642-8228 Ext :2025

Contact Person

Contact Person Telephone Number

keebaughl@fairfield.k12.pa.us

(717)642-2036

Contact Person E-mail Address

Contact Person Fax Number

Audit Certification

Annual Financial Report:

For Fiscal Year Ending 6/30/2020

(Pursuant to PA School Code Section 218(b))

LEA Name : Fairfield Area SD

AUN Number : 112013054

County : Adams

Audit Certification Due:

12/31/2020

This certification is applicable to the Annual Financial Report data submitted through the Consolidated Financial Reporting System (CFRS).

CERTIFICATION: By signing this page I agree that the financial statements of the school have been properly audited as noted above pursuant to Article XXIV, and in the auditor's professional opinion, the Annual Financial Report (PDE-2057) submitted through CFRS is materially consistent with the audited financial statements.

Chief School Administrator

Signature

Date

Board Secretary

Signature

Date

Army B Simmons

Contact Person

(717)642-8228

Ext :2025

Contact Person Telephone Number

simmonsab@fairfield.k12.pa.us

Contact Person E-mail Address

(717)642-2036

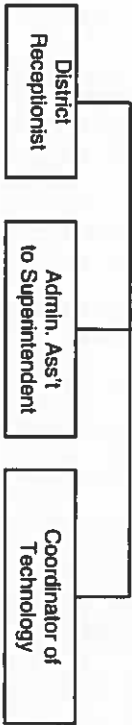
Contact Person Fax Number

FAIRFIELD AREA SCHOOL DISTRICT- Table of Organization - 2018

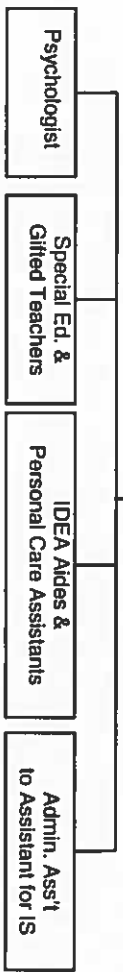
Policy #008

BOARD OF EDUCATION

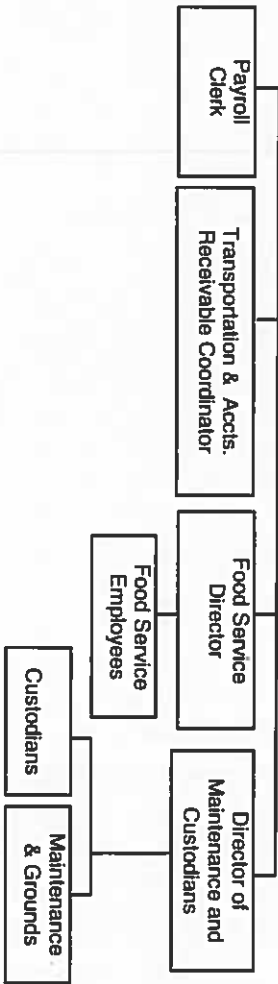
Superintendent of Schools



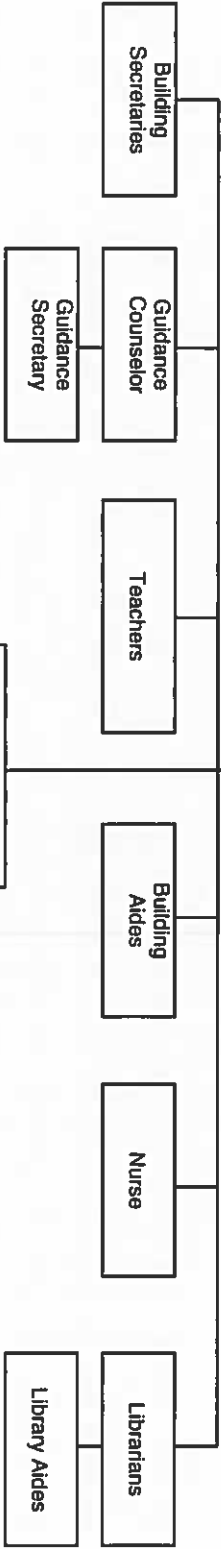
Special Education Supervisor



Business Manager



Building Principals



<u>Val Number</u>	<u>Description</u>	<u>Justification</u>
42420	Expenditure Detail: Total current year 2700-513 expenditure varies from prior year by 10%. Correct the data or enter a justification. 2700-513, AFR Exp Detail: \$796,455.00 2700-513, PY AFR Amount: \$905,649.55	due to Covid 19 closure we neg. a lower rate for cover overhead for our contractors
50410	SESS - 2140 Psychological Services: SESS Schedule amounts for Special Education vary from prior year by 40% or more. Correct the data or enter a justification. SESS Schedule 2140: \$20,076.08 Prior Year SESS Schedule 2140: \$97,319.24	identified student(s) moved out of the district/ graduated, and the COVID Closure
50440	SESS - 2260 Instruction and Curriculum Development Services: SESS Schedule amounts for Special Education vary from prior year by 40% or more. Correct the data or enter a justification. SESS Schedule 2260: \$922.00 Prior Year SESS Schedule 2260: \$0.00	current year involved curriculum changes and adjustments needed to support the needs of the students
50450	SESS - 2350 Legal and Accounting Services: SESS Schedule amounts for Special Education vary from prior year by 40% or more. Correct the data or enter a justification. SESS Schedule 2350: \$5,341.00 Prior Year SESS Schedule 2350: \$12,803.79	Prior year legal fees higher due to special education legal case investigation and review, settlement less need for legal advice during COVID closure
50470	SESS - 2440 Nursing Services: SESS Schedule amounts for Special Education vary from prior year by 40% or more. Correct the data or enter a justification. SESS Schedule 2440: \$18,840.51 Prior Year SESS Schedule 2440: \$12,941.04	Increased nursing support

LEA : 112013054 Fairfield Area SD

Printed 1/4/2022 9:33:14 AM

Amounts Expressed in Whole Dollars		<u>General Fund</u> <u>(10)</u>	<u>Student Sponsored</u> <u>Activity Fund</u> <u>(21)</u>	<u>Public Purpose Trust</u> <u>(27)</u>	<u>Other Compt Approved</u> <u>(28)</u>	<u>Athletic / Activity</u> <u>(29)</u>
Assets And Deferred Outflows Of Resources						
Assets						
0100	Cash and Cash Equivalents	7,867,755				
0110	Investments					
0120	Taxes Receivable	1,126,127				
0130	Due From Other Funds	249,324				
0141	Due From Other Governments	94,544				
0142	State Revenue Receivable	1,086,614				
0143	Federal Revenue Receivable	230,148				
0145	Other Intergovernmental Revenue Receivable					
0146	Due from Primary Government					
0147	Due from Component Unit					
0150	Other Receivables	6,273				
0170	Inventories					
0180	Prepaid Expenses (Expenditures)	80,000				
0190	Other Current Assets					
Total Assets		\$10,740,785				
0910	Deferred Outflows of Resources					
Total Assets And Deferred Outflows Of Resources		\$10,740,785				

LEA : 112013054 Fairfield Area SD

Printed 1/4/2022 9:33:14 AM

Amounts Expressed in Whole Dollars		<u>Capital Reserve (690.</u> <u>1850)</u> <u>(31)</u>	<u>Capital Reserve (1431)</u> <u>(32)</u>	<u>Other Capital Projects</u> <u>Fund</u> <u>(39)</u>	<u>Debt Service</u> <u>(40)</u>	<u>Permanent</u> <u>(90)</u>
Assets And Deferred Outflows Of Resources						
Assets						
0100	Cash and Cash Equivalents		128,333	632,227		
0110	Investments					
0120	Taxes Receivable					
0130	Due From Other Funds			503,571		
0141	Due From Other Governments					
0142	State Revenue Receivable					
0143	Federal Revenue Receivable					
0145	Other Intergovernmental Revenue Receivable					
0146	Due from Primary Government					
0147	Due from Component Unit					
0150	Other Receivables					
0170	Inventories					
0180	Prepaid Expenses (Expenditures)		4,714	1,136,121		
0190	Other Current Assets					
Total Assets			\$133,047	\$2,271,919		
0910	Deferred Outflows of Resources					
Total Assets And Deferred Outflows Of Resources			\$133,047	\$2,271,919		

LEA : 112013054 Fairfield Area SD

Printed 1/4/2022 9:33:14 AM

Amounts Expressed in Whole Dollars		<u>Total Governmental Funds</u>
Assets And Deferred Outflows Of Resources		
Assets		
0100 Cash and Cash Equivalents	8,628,315	
0110 Investments		
0120 Taxes Receivable	1,126,127	
0130 Due From Other Funds	752,895	
0141 Due From Other Governments	94,544	
0142 State Revenue Receivable	1,086,614	
0143 Federal Revenue Receivable	230,148	
0145 Other Intergovernmental Revenue Receivable		
0146 Due from Primary Government		
0147 Due from Component Unit		
0150 Other Receivables	6,273	
0170 Inventories		
0180 Prepaid Expenses (Expenditures)	1,220,835	
0190 Other Current Assets		
Total Assets	\$13,145,751	
0910 Deferred Outflows of Resources		
Total Assets And Deferred Outflows Of Resources	\$13,145,751	

LEA : 112013054 Fairfield Area SD

Printed 1/4/2022 9:33:14 AM

Amounts Expressed in Whole Dollars		<u>General Fund</u> <u>(10)</u>	<u>Student Sponsored</u> <u>Activity Fund</u> <u>(21)</u>	<u>Public Purpose Trust</u> <u>(27)</u>	<u>Other Compt Approved</u> <u>(28)</u>	<u>Athletic / Activity</u> <u>(29)</u>
Liabilities And Deferred Inflows Of Resources And Fund Balances						
Liabilities						
0400	Due to Other Funds	503,571				
0411	Due to Other Governments					
0412	Due to Primary Government					
0413	Due to Component Unit					
0420	Accounts Payable	489,369				
0430	Contracts Payable					
0440	Current Portion of Long-Term Debt					
0450	Short-Term Payables					
0461	Accrued Salaries and Benefits	1,509,900				
0462	Payroll Deductions and Withholding					
0480	Unearned Revenues	56,902				
0490	Other Current Liabilities					
Total Liabilities		\$2,559,742				
0950	Deferred Inflows of Resources	460,203				
Fund Balances						
0810	Nonspendable Fund Balance	80,000				
0820	Restricted Fund Balance	18,000				
0830	Committed Fund Balance	2,748,765				
0840	Assigned Fund Balance	3,298,000				
0850	Unassigned Fund Balance	1,576,075				
Total Fund Balances		\$7,720,840				
Total Liabilities, Deferred Inflows Of Resources And Fund Balances		\$10,740,785				

LEA : 112013054 Fairfield Area SD

Printed 1/4/2022 9:33:14 AM

Amounts Expressed in Whole Dollars		<u>Capital Reserve (690.</u> <u>1850)</u> <u>(31)</u>	<u>Capital Reserve (1431)</u> <u>(32)</u>	<u>Other Capital Projects</u> <u>Fund</u> <u>(39)</u>	<u>Debt Service</u> <u>(40)</u>	<u>Permanent</u> <u>(90)</u>
Liabilities And Deferred Inflows Of Resources And Fund Balances						
Liabilities						
0400	Due to Other Funds					
0411	Due to Other Governments					
0412	Due to Primary Government					
0413	Due to Component Unit					
0420	Accounts Payable		27,656			
0430	Contracts Payable					
0440	Current Portion of Long-Term Debt					
0450	Short-Term Payables					
0461	Accrued Salaries and Benefits					
0462	Payroll Deductions and Withholding					
0480	Unearned Revenues					
0490	Other Current Liabilities					
Total Liabilities			\$27,656			
0950	Deferred Inflows of Resources					
Fund Balances						
0810	Nonspendable Fund Balance					
0820	Restricted Fund Balance		105,391	2,271,919		
0830	Committed Fund Balance					
0840	Assigned Fund Balance					
0850	Unassigned Fund Balance					
Total Fund Balances			\$105,391	\$2,271,919		
Total Liabilities, Deferred Inflows Of Resources And Fund Balances			\$133,047	\$2,271,919		

LEA : 112013054 Fairfield Area SD

Printed 1/4/2022 9:33:14 AM

Amounts Expressed in Whole Dollars		<u>Total Governmental Funds</u>
Liabilities And Deferred Inflows Of Resources And Fund Balances		
Liabilities		
0400 Due to Other Funds		503,571
0411 Due to Other Governments		
0412 Due to Primary Government		
0413 Due to Component Unit		
0420 Accounts Payable		517,025
0430 Contracts Payable		
0440 Current Portion of Long-Term Debt		
0450 Short-Term Payables		
0461 Accrued Salaries and Benefits		1,509,900
0462 Payroll Deductions and Withholding		
0480 Unearned Revenues		56,902
0490 Other Current Liabilities		
Total Liabilities		\$2,587,398
0950 Deferred Inflows of Resources		460,203
Fund Balances		
0810 Nonspendable Fund Balance		80,000
0820 Restricted Fund Balance		2,395,310
0830 Committed Fund Balance		2,748,765
0840 Assigned Fund Balance		3,298,000
0850 Unassigned Fund Balance		1,576,075
Total Fund Balances		\$10,098,150
Total Liabilities, Deferred Inflows Of Resources And Fund Balances		\$13,145,751

Amounts Expressed in Whole Dollars	<u>General Fund</u> <u>(10)</u>	<u>Student Sponsored</u> <u>Activity Fund</u> <u>(21)</u>	<u>Public Purpose Trust</u> <u>(27)</u>	<u>Other Compt Approved</u> <u>(28)</u>	<u>Athletic / Activity</u> <u>(29)</u>
Revenues					
6000 Revenue from Local Sources	11,838,931				
7000 Revenue from State Sources	7,142,908				
8000 Revenue from Federal Sources	242,829				
Total Revenues	\$19,224,668				
Expenditures					
1000 Instruction	9,771,071				
2000 Support Services	5,610,271				
3000 Operation of Non-Instructional Services	502,853				
4000 Facilities Acquisition, Construction and Improvement Services					
5110 Debt Service	1,716,873				
5130 Refund of Prior Year Revenues / Receipts					
Total Expenditures	\$17,601,068				
Excess (Deficiency) Of Revenues Over Expenditures	\$1,623,600				
Other Financing Sources (Uses)					
9110 Face Value of Bonds Issued					
9120 Proceeds from Refunding of Bonds	11,222,406				
9130 Bond Premiums	1,618,850				
9200 Proceeds from Extended-Term Financing					
9300 Interfund Transfers - IN					
9400 Sale of or Compensation for Loss of Fixed Assets					
9710 Transfers from Component Units					
9720 Transfers from Primary Governments					
9910 Other Financing Sources Not Listed in the 9000 Series					
9990 Insurance Recoveries					
5120 Debt Service – Refunded Bonds	12,492,228				
5150 Bond Discounts					
5200 Interfund Transfers – Out	563,571				
5300 Transfers Out to Component Units/Primary Governments					
Total Other Financing Sources (Uses)	(\$214,543)				

Amounts Expressed in Whole Dollars	<u>Capital Reserve (690.1850)</u> <u>(31)</u>	<u>Capital Reserve (1431)</u> <u>(32)</u>	<u>Other Capital Projects</u> <u>Fund</u> <u>(39)</u>	<u>Debt Service</u> <u>(40)</u>	<u>Permanent</u> <u>(90)</u>
Revenues					
6000 Revenue from Local Sources		406	909		
7000 Revenue from State Sources					
8000 Revenue from Federal Sources					
Total Revenues		\$406	\$909		
Expenditures					
1000 Instruction					
2000 Support Services					
3000 Operation of Non-Instructional Services					
4000 Facilities Acquisition, Construction and Improvement Services		117,361	5,572,846		
5110 Debt Service					
5130 Refund of Prior Year Revenues / Receipts					
Total Expenditures		\$117,361	\$5,572,846		
Excess (Deficiency) Of Revenues Over Expenditures		(\$116,955)	(\$5,571,937)		
Other Financing Sources (Uses)					
9110 Face Value of Bonds Issued					
9120 Proceeds from Refunding of Bonds					
9130 Bond Premiums					
9200 Proceeds from Extended-Term Financing					
9300 Interfund Transfers - IN			503,571		
9400 Sale of or Compensation for Loss of Fixed Assets					
9710 Transfers from Component Units					
9720 Transfers from Primary Governments					
9910 Other Financing Sources Not Listed in the 9000 Series					
9990 Insurance Recoveries					
5120 Debt Service – Refunded Bonds					
5150 Bond Discounts					
5200 Interfund Transfers – Out					
5300 Transfers Out to Component Units/Primary Governments					
Total Other Financing Sources (Uses)			\$503,571		

Amounts Expressed in Whole Dollars		<u>Total Governmental Funds</u>
Revenues		
6000	Revenue from Local Sources	11,840,246
7000	Revenue from State Sources	7,142,908
8000	Revenue from Federal Sources	242,829
Total Revenues		\$19,225,983
Expenditures		
1000	Instruction	9,771,071
2000	Support Services	5,610,271
3000	Operation of Non-Instructional Services	502,853
4000	Facilities Acquisition, Construction and Improvement Services	5,690,207
5110	Debt Service	1,716,873
5130	Refund of Prior Year Revenues / Receipts	
Total Expenditures		\$23,291,275
Excess (Deficiency) Of Revenues Over Expenditures		(\$4,065,292)
Other Financing Sources (Uses)		
9110	Face Value of Bonds Issued	
9120	Proceeds from Refunding of Bonds	11,222,406
9130	Bond Premiums	1,618,850
9200	Proceeds from Extended-Term Financing	
9300	Interfund Transfers - IN	503,571
9400	Sale of or Compensation for Loss of Fixed Assets	
9710	Transfers from Component Units	
9720	Transfers from Primary Governments	
9910	Other Financing Sources Not Listed in the 9000 Series	
9990	Insurance Recoveries	
5120	Debt Service – Refunded Bonds	12,492,228
5150	Bond Discounts	
5200	Interfund Transfers – Out	563,571
5300	Transfers Out to Component Units/Primary Governments	
Total Other Financing Sources (Uses)		\$289,028

Amounts Expressed in Whole Dollars		<u>General Fund</u> <u>(10)</u>	<u>Student Sponsored</u> <u>Activity Fund</u> <u>(21)</u>	<u>Public Purpose Trust</u> <u>(27)</u>	<u>Other Compt Approved</u> <u>(28)</u>	<u>Athletic / Activity</u> <u>(29)</u>
Special And Extraordinary Items						
9920	Special Items – Gains					
9930	Extraordinary Items – Gains					
5520	Special Items – Losses					
5530	Extraordinary Items – Losses					
Net Change In Fund Balances		\$1,409,057				
Fund Balance						
0001	Fund Balance - Beginning of Fiscal Year	6,311,783				
Fund Balance - End Of Year		\$7,720,840				

Amounts Expressed in Whole Dollars		<u>Capital Reserve (690.</u> <u>1850)</u> <u>(31)</u>	<u>Capital Reserve (1431)</u> <u>(32)</u>	<u>Other Capital Projects</u> <u>Fund</u> <u>(39)</u>	<u>Debt Service</u> <u>(40)</u>	<u>Permanent</u> <u>(90)</u>
Special And Extraordinary Items						
9920	Special Items – Gains					
9930	Extraordinary Items – Gains					
5520	Special Items – Losses					
5530	Extraordinary Items – Losses					
Net Change In Fund Balances			(\$116,955)	(\$5,068,366)		
Fund Balance						
0001	Fund Balance - Beginning of Fiscal Year		222,346	7,340,285		
Fund Balance - End Of Year			\$105,391	\$2,271,919		

Amounts Expressed in Whole Dollars		<u>Total Governmental</u> <u>Funds</u>
Special And Extraordinary Items		
9920	Special Items – Gains	
9930	Extraordinary Items – Gains	
5520	Special Items – Losses	
5530	Extraordinary Items – Losses	
Net Change In Fund Balances		(\$3,776,264)
Fund Balance		
0001	Fund Balance - Beginning of Fiscal Year	13,874,414
Fund Balance - End Of Year		\$10,098,150

LEA : 112013054 Fairfield Area SD

Printed 1/4/2022 9:33:26 AM

Amounts Expressed in Whole Dollars		<u>Food Service</u> <u>(51)</u>	<u>Child Care</u> <u>Operations</u> <u>(52)</u>	<u>Other Enterprise</u> <u>(58)</u>	<u>TOTAL</u>	<u>Internal Service</u> <u>(60)</u>
Assets And Deferred Outflows Of Resources						
Current Assets						
0100	Cash and Cash Equivalents	234,029			234,029	
0110	Investments					
0130	Due From Other Funds	729			729	
0141	Due From Other Governments					
0142	State Revenue Receivable					
0143	Federal Revenue Receivable					
0146	Due from Primary Government					
0147	Due from Component Unit					
0150	Other Receivables					
0170	Inventories	28,841			28,841	
0180	Prepaid Expenses (Expenditures)					
0190	Other Current Assets					
Total Current Assets		\$263,599			\$263,599	
Noncurrent Assets						
0211	Land					
0212	Site Improvements (Net)					
0220	Buildings and Building Improvements (Net)					
0230	Machinery, Equipment and Furniture (Net)	19,981			19,981	
0250	Construction in Progress					
0260	Long Term Prepayments					
0290	Other Noncurrent Assets					
Total Noncurrent Assets		\$19,981			\$19,981	
0910	Deferred Outflows of Resources	94,161			94,161	
Total Assets And Deferred Outflows Of Resources		\$377,741			\$377,741	

LEA : 112013054 Fairfield Area SD

Printed 1/4/2022 9:33:26 AM

Amounts Expressed in Whole Dollars	Food Service (51)	Child Care Operations (52)	Other Enterprise (58)	TOTAL	Internal Service (60)
Liabilities And Deferred Inflows Of Resources And Net Position					
Current Liabilities					
0400 Due to Other Funds	249,324			249,324	
0411 Due to Other Governments					
0413 Due to Component Unit					
0420 Accounts Payable	19,494			19,494	
0430 Contracts Payable					
0440 Current Portion of Long-Term Debt					
0450 Short-Term Payables					
0461 Accrued Salaries and Benefits					
0462 Payroll Deductions and Withholding					
0480 Unearned Revenues					
0490 Other Current Liabilities	1,508			1,508	
Total Current Liabilities	\$270,326			\$270,326	
Noncurrent Liabilities					
0510 Bonds Payable					
0520 Extended-Term Financing Agreements Payable					
0530 Lease-Purchase Obligations					
0540 Accumulated Compensated Absences	9,139			9,139	
0550 Authority Lease Obligations					
0560 Other Post-Employment Benefits (OPEB)	27,674			27,674	
0570 Net Pension Liability	529,011			529,011	
0599 Other Noncurrent Liabilities					
Total Noncurrent Liabilities	\$565,824			\$565,824	
Total Liabilities	\$836,150			\$836,150	
0950 Deferred Inflows of Resources	37,376			37,376	
Net Position					
0791 Net Investment in Capital Assets	19,981			19,981	
0008 Restricted Net Position (0792 – 0798)					
0799 Unrestricted Net Position	(515,766)			(515,766)	
Total Net Position	(\$495,785)			(\$495,785)	
Total Liabilities And Deferred Inflows Of Resources And Net Position	\$377,741			\$377,741	

Amounts Expressed in Whole Dollars	<u>Food Service</u> <u>(51)</u>	<u>Child Care Operations</u> <u>(52)</u>	<u>Other Enterprise</u> <u>(58)</u>	<u>TOTAL</u>	<u>Internal Service</u> <u>(60)</u>
Operating Revenues					
6600 Food Service Revenue	168,752			168,752	
0071 Charges for Services					
0072 Other Operating Revenue					
Total Operating Revenues	\$168,752			\$168,752	
Operating Expenses					
100 Personnel Services – Salaries	158,155			158,155	
200 Personnel Services – Employee Benefits	94,714			94,714	
300 Purchased Professional and Technical Services	6,832			6,832	
400 Purchased Property Services					
500 Other Purchased Services	3,923			3,923	
600 Supplies	136,869			136,869	
740 Depreciation	1,052			1,052	
810 Dues and Fees	1,077			1,077	
890 Miscellaneous Expenditures					
Total Operating Expenses	\$402,622			\$402,622	
Operating Income (Loss)	(\$233,870)			(\$233,870)	
Non Operating Revenues (Expenses)					
6500 Earnings on Investments					
6920 Contributions and Donations from Private Sources					
6930 Gains or Losses on Sale of Fixed Assets					
6991 Refunds of a Prior Year Expenditure					
7000 Revenue from State Sources	40,045			40,045	
8000 Revenue from Federal Sources	112,676			112,676	
9990 Insurance Recoveries					
820 Claims and Judgments Against the LEA					
830 Interest					
TOTAL Non Operating Revenues (Expenses)	\$152,721			\$152,721	
Income (Loss) Before Contributions And Transfers	(\$81,149)			(\$81,149)	

Amounts Expressed in Whole Dollars	<u>Food Service</u> <u>(51)</u>	<u>Child Care Operations</u> <u>(52)</u>	<u>Other Enterprise</u> <u>(58)</u>	<u>TOTAL</u>	<u>Internal Service</u> <u>(60)</u>
Contributions, Transfers, and Special and Extraordinary Items					
5200 Interfund Transfers – Out					
5300 Transfers Out to Component Units/Primary Governments					
5520 Special Items – Losses					
5530 Extraordinary Items – Losses					
9300 Interfund Transfers - IN	60,000			60,000	
9500 Capital Contributions					
9700 Transfers IN From Component Units/Primary Governments					
9920 Special Items – Gains					
9930 Extraordinary Items – Gains					
Change In Net Position	(\$21,149)			(\$21,149)	
0002 Net Position - Beginning of Fiscal Year	(474,636)			(474,636)	
0003 Accounting Changes / Residual Equity Transfers					
Net Position - End Of Year	(\$495,785)			(\$495,785)	

LEA : 112013054 Fairfield Area SD

Printed 1/4/2022 9:33:42 AM

Amounts Expressed in Whole Dollars	<u>Food Service</u> <u>(51)</u>	<u>Child Care Operations</u> <u>(52)</u>	<u>Other Enterprise</u> <u>(58)</u>	<u>TOTAL</u>	<u>Internal Service(60)</u>
Cash Flows From Operating Activities					
0011 Cash Receipts From Users	168,752			168,752	
0012 Cash Receipts From Assessments Made to Other Funds					
0013 Cash Receipts From Earnings on Investments					
0014 Cash Receipts From Other Operating Revenue					
0015 Cash Payments To Employees For Services	11,686			11,686	
0016 Cash Payments For Insurance Claims					
0017 Cash Payments To Suppliers For Goods and Services	124,498			124,498	
0018 Cash Payments For Other Operating Expenses	10,680			10,680	
Net Cash Provided By (Used For) Operating Activities	\$21,888			\$21,888	
Cash Flows From Non-Capital Financing Activities					
0021 Receipts From Local Sources - 6000					
0022 Receipts From State Sources - 7000	40,025			40,025	
0023 Receipts From Federal Sources -8000	92,270			92,270	
0024 Notes and Loans Received (Repaid)					
0025 Interest Paid on Notes/Loans - 5100-830					
0026 Operating Transfers In (Out)/Residual Equity Trans					
0027 Operating Transfers In (Out) Primary Government / Comp Unit	60,000			60,000	
0028 Receipts From Refund of Prior Year Expenditures - 6991					
0029 Special and Extraordinary Gains (losses)					
0030 Receipts from Insurance Recoveries -9990					
Net Cash Prov By (Used for) Non-Capital Financing Activities	\$192,295			\$192,295	
Cash Flows From Capital and Related Financing Activities					
0031 Payments For Fac Acq, Const, and Imp - 4000	(21,033)			(21,033)	
0032 Gain / (Loss) on Sale of Fixed Assets - 6930					
0033 Proceeds From Extended Term Financing - 9200					
0034 Principal Paid on Financing Agreements					
0035 Interest Paid on Financing Agreements - 5100-830					
0036 (Inc) Dec in Contributed Capital					
Net Cash Prov By (Used for) Capital and Related Financing Activities	(\$21,033)			(\$21,033)	
Cash Flows From Investing Activities					
0041 Earnings on Investments - 6500					
0042 Purchase of Inv Securities / Deposits to Inv Pools					
0043 Receipts From Investment Pool Withdrawals					
0044 Proceeds from Sale and Maturity of Inv Securities					

LEA : 112013054 Fairfield Area SD

Printed 1/4/2022 9:33:42 AM

0045 Loans Received (Paid)

Net Cash Prov By (Used for) Investing Activities

LEA : 112013054 Fairfield Area SD

Printed 1/4/2022 9:33:42 AM

	Food Service (51)	Child Care Operations (52)	Other Enterprise (58)	TOTAL	Internal Service (60)
Net Increase (Decrease) in Cash Flows	193,150			193,150	
0004 Cash and Cash Equivalents Beginning of Year	40,879			40,879	
Cash and Cash Equivalents at Year End	\$234,029			\$234,029	
Reconciliation of Operating Income (Loss) To Net Cash Provided by (Used For) Operating Activities					
0005 Operating Income (Loss) per REP	(233,870)			(233,870)	
Adjustments					
0051 Depreciation and Net Amortization	1,052			1,052	
0052 Provision for Uncollectible Accounts					
0053 Other Adjustments	19,697			19,697	
Effect of Changes in Assets, Liabilities, Deferred Outflows and Deferred Inflows					
0054 (Inc) Dec In Accounts Receivable (0120-0150)	235,947			235,947	
0055 Advances to Other Funds (0160)					
0056 (Inc) Dec in Inventories (0170)	(14,858)			(14,858)	
0057 (Inc) Dec in Prepaid Expenses (0180)					
0058 (Inc) Dec in Other Current or Noncurrent Assets					
0064 Deferred Outflows (0910)					
0059 Inc (Dec) in Accounts Payable (0400-0450)	8,684			8,684	
0060 Inc (Dec) in Accrued Salaries/Benefits (0461)	742			742	
0065 Inc (Dec) in Net Pension Liabilities (0570)	12,743			12,743	
0066 Inc (Dec) in Other Postemp Benefit Oblig (0560)	(8,249)			(8,249)	
0061 Inc (Dec) in Payroll Deductions/Withholding (0462)					
0062 Inc (Dec) in Unearned Revenue (0480)					
0063 Inc (Dec) in Other Current or Noncurrent Liabilities					
0067 Deferred Inflows (0950)					
Total Adjustments	\$255,758			\$255,758	
Cash Provided By (Used for) Total	\$21,888			\$21,888	

COMBINED STATEMENT OF CASH FLOWS
SCHEDULE OF NONCASH INVESTING, CAPITAL, AND FINANCING ACTIVITIES

Explanation of Transaction and Balance Sheet Effect	Amount
Total	

LEA : 112013054 Fairfield Area SD

Printed 1/4/2022 9:33:45 AM

Amounts Expressed in Whole Dollars		<u>Private Purpose Trust</u> <u>(71)</u>	<u>Investment Trust</u> <u>(72)</u>	<u>Pension Trust</u> <u>(73)</u>	<u>Student Activity Custodial</u> <u>(81)</u>
Assets And Deferred Outflows Of Resources					
Assets					
0100	Cash and Cash Equivalents	9,296			81,562
0110	Investments				
0130	Due From Other Funds				
0140	Due from Other Governments, Primary Government and Component Units				
0150	Other Receivables				
0170	Inventories				
0180	Prepaid Expenses (Expenditures)				
0190	Other Current Assets				
0220	Buildings and Building Improvements (Net)				
0230	Machinery, Equipment and Furniture (Net)				
Total Assets		\$9,296			\$81,562
0910	Deferred Outflows of Resources				
Total Assets And Deferred Outflows Of Resources		\$9,296			\$81,562

LEA : 112013054 Fairfield Area SD

Printed 1/4/2022 9:33:45 AM

Amounts Expressed in Whole Dollars		<u>Other Custodial</u> <u>(89)</u>	<u>Fiduciary Component Units</u> <u>(98)</u>	<u>Total Fiduciary Funds</u>
Assets And Deferred Outflows Of Resources				
Assets				
0100	Cash and Cash Equivalents			90,858
0110	Investments			
0130	Due From Other Funds			
0140	Due from Other Governments, Primary Government and Component Units			
0150	Other Receivables			
0170	Inventories			
0180	Prepaid Expenses (Expenditures)			
0190	Other Current Assets			
0220	Buildings and Building Improvements (Net)			
0230	Machinery, Equipment and Furniture (Net)			
Total Assets				\$90,858
0910	Deferred Outflows of Resources			
Total Assets And Deferred Outflows Of Resources				\$90,858

LEA : 112013054 Fairfield Area SD

Printed 1/4/2022 9:33:45 AM

Amounts Expressed in Whole Dollars		<u>Private Purpose Trust</u>	<u>Investment Trust</u>	<u>Pension Trust</u>	<u>Student Activity Custodial</u>
		<u>(71)</u>	<u>(72)</u>	<u>(73)</u>	<u>(81)</u>
Liabilities, Deferred Inflows Of Resources And Net Position					
Liabilities					
0400	Due to Other Funds				
0410	Due to Other Governments, Primary Government and Component Units				
0420	Accounts Payable				
0430	Contracts Payable				
0450	Short-Term Payables				
0460	Payroll Accruals and Withholdings				
0480	Unearned Revenues				
0490	Other Current Liabilities				81,562
Total Liabilities					\$81,562
0950	Deferred Inflows of Resources				
Net Position					
0791	Net Investment in Capital Assets				
0009	Restricted Net Position (0792 – 0798)	9,296			
0799	Unrestricted Net Position				
Total Net Position		\$9,296			
Total Liabilities, Deferred Inflows Of Resources And Net Position		\$9,296			\$81,562

LEA : 112013054 Fairfield Area SD

Printed 1/4/2022 9:33:45 AM

Amounts Expressed in Whole Dollars		<u>Other Custodial</u> <u>(89)</u>	<u>Fiduciary Component Units</u> <u>(98)</u>	<u>Total Fiduciary Funds</u>
Liabilities, Deferred Inflows Of Resources And Net Position				
Liabilities				
0400	Due to Other Funds			
0410	Due to Other Governments, Primary Government and Component Units			
0420	Accounts Payable			
0430	Contracts Payable			
0450	Short-Term Payables			
0460	Payroll Accruals and Withholdings			
0480	Unearned Revenues			
0490	Other Current Liabilities			81,562
Total Liabilities				\$81,562
0950	Deferred Inflows of Resources			
Net Position				
0791	Net Investment in Capital Assets			
0009	Restricted Net Position (0792 – 0798)			9,296
0799	Unrestricted Net Position			
Total Net Position				\$9,296
Total Liabilities, Deferred Inflows Of Resources And Net Position				\$90,858

LEA : 112013054 Fairfield Area SD

Printed 1/4/2022 9:33:47 AM

Amounts Expressed in Whole Dollars	<u>Private Purpose Trust</u> (71)	<u>Investment Trust</u> (72)	<u>Pension Trust</u> (73)	<u>Student Activity</u> <u>Custodial</u> (81)	<u>Other Custodial</u> (89)	<u>Fiduciary Component</u> <u>Units</u> (98)
Additions						
0091 Gifts and Contributions						
0095 Net Investment Earnings						
0092 Other Additions						
Deductions						
0093 Scholarships Awarded	700					
0094 Other Deductions						
Change In Net Position	(\$700)					
0006 Net Position – Beginning of Fiscal Year	9,996					
0007 Net Position Held in Trust for Pension Benefits						
Net Position - End of Fiscal Year	\$9,296					

LEA : 112013054 Fairfield Area SD

Printed 1/4/2022 9:33:47 AM

Amounts Expressed in Whole Dollars		<u>Total Fiduciary</u>
		<u>Funds</u>
Additions		
0091	Gifts and Contributions	
0095	Net Investment Earnings	
0092	Other Additions	
Deductions		
0093	Scholarships Awarded	700
0094	Other Deductions	
Change In Net Position		(\$700)
0006	Net Position – Beginning of Fiscal Year	9,996
0007	Net Position Held in Trust for Pension Benefits	
Net Position - End of Fiscal Year		\$9,296

LEA : 112013054 Fairfield Area SD

General Fund (10)

Printed 1/4/2022 9:33:50 AM

Page - 1 of 4

	Revenue Reported In Current Year	Current Year Tax Accrual	Prior Year Tax Accrual	Taxes Collected In Current Year
Revenue from Local Sources				
6111 Current Real Estate Taxes	8,788,064.02			8,788,064.02
6112 Interim Real Estate Taxes	18,214.22			18,214.22
6113 Public Utility Realty Taxes	10,024.29			10,024.29
6114 Payments in Lieu of Current Taxes - State / Local	15,337.13			15,337.13
6151 Current Act 511 Earned Income Taxes	2,217,772.00			2,217,772.00
6153 Current Act 511 Real Estate Transfer Taxes	194,710.41			194,710.41
6154 Current Act 511 Amusement Taxes	13,453.78			13,453.78
6411 Delinquent Real Estate Taxes	255,110.15			255,110.15
6500 Earnings on Investments	35,942.62			
6700 Revenues from LEA Activities	33,122.48			
6821 State Revenue Received from Other Pennsylvania Public LEAs	11,093.00			
6831 Federal Revenue Received from Other Pennsylvania Public LEAs	24,730.34			
6832 Federal IDEA Revenue Received as Pass Through	119,857.00			
6910 Rentals	12,579.00			
6920 Contributions and Donations from Private Sources	24,068.67			
6944 Receipts from Other LEAs in Pennsylvania - Education	48,218.00			
6991 Refunds of a Prior Year Expenditure	745.78			
6999 Other Revenues Not Specified Above	15,888.00			
TOTAL Revenue from Local Sources	\$11,838,930.89			\$11,512,686.00

	Revenue Reported In Current Year			
<u>Revenue from State Sources</u>				
7111 Basic Education Funding-Formula	3,569,217.46			
7160 Tuition for Orphans Subsidy	43,108.43			
7220 Vocational Education	17,776.70			
7271 Special Education funds for School-Aged Pupils	659,754.95			
7299 Program Revenues Not Listed Previously in the 7200 Series	56,910.77			
7311 Pupil Transportation Subsidy	612,925.17			
7312 Nonpublic and Charter School Pupil Transportation Subsidy	4,235.00			
7320 Rental and Sinking Fund Payments / Building Reimbursement Subsidy	162,699.88			
7330 Health Services (Medical, Dental, Nurse, Act 25)	11,341.00			
7340 State Property Tax Reduction Allocation	460,188.61			
7505 Ready to Learn Block Grant	147,924.00			
7506 PAsmart Grants	26,644.62			
7810 State Share of Social Security and Medicare Taxes	230,058.88			
7820 State Share of Retirement Contributions	1,140,122.52			
TOTAL Revenue from State Sources	\$7,142,907.99			

	Revenue Reported In Current Year			
<u>Revenue from Federal Sources</u>				
8514 NCLB, Title I - Improving the Academic Achievement of the Disadvantaged	95,236.94			
8515 NCLB, Title II - Preparing, Training and Recruiting High Quality Teachers and Principals	25,959.00			
8517 NCLB, Title IV - 21St Century Schools	10,000.00			
8521 Vocational Education - Operating Expenditures	11,511.00			
8741 Elementary and Secondary School Emergency Relief Fund (ESSER)	100,122.36			
TOTAL Revenue from Federal Sources	\$242,829.30			

					Revenue Reported In Current Year			
<u>Other Financing Sources</u>								
9120	Proceeds from Refunding of Bonds				11,222,406.00			
9130	Bond Premiums				1,618,850.00			
TOTAL Other Financing Sources					\$12,841,256.00			
TOTAL FROM ALL SOURCES					\$32,065,924.18	\$11,512,686.00		

LEA : 112013054 Fairfield Area SD

Printed 1/4/2022 9:33:55 AM

	<u>General Fund (10)</u>	<u>Student Sponsored Activity Fund (21)</u>	<u>Public Purpose Trust (27)</u>	<u>Other Compt Approved (28)</u>	<u>Athletic / Activity (29)</u>	<u>Capital Reserve (690, 1850) (31)</u>
6000 Revenue from Local Sources						
6111 Current Real Estate Taxes	8,788,064.02					
6112 Interim Real Estate Taxes	18,214.22					
6113 Public Utility Realty Taxes	10,024.29					
6114 Payments in Lieu of Current Taxes - State / Local	15,337.13					
6151 Current Act 511 Earned Income Taxes	2,217,772.00					
6153 Current Act 511 Real Estate Transfer Taxes	194,710.41					
6154 Current Act 511 Amusement Taxes	13,453.78					
6411 Delinquent Real Estate Taxes	255,110.15					
6500 Earnings on Investments	35,942.62					
6700 Revenues from LEA Activities	33,122.48					
6821 State Revenue Received from Other Pennsylvania Public LEAs	11,093.00					
6831 Federal Revenue Received from Other Pennsylvania Public LEAs	24,730.34					
6832 Federal IDEA Revenue Received as Pass Through	119,857.00					
6910 Rentals	12,579.00					
6920 Contributions and Donations from Private Sources	24,068.67					
6944 Receipts from Other LEAs in Pennsylvania - Education	48,218.00					
6991 Refunds of a Prior Year Expenditure	745.78					
6999 Other Revenues Not Specified Above	15,888.00					
6000 Total Revenue from Local Sources	\$11,838,930.89					
7000 Revenue from State Sources						
7111 Basic Education Funding-Formula	3,569,217.46					
7160 Tuition for Orphans Subsidy	43,108.43					
7220 Vocational Education	17,776.70					
7271 Special Education funds for School-Aged Pupils	659,754.95					
7299 Program Revenues Not Listed Previously in the 7200 Series	56,910.77					
7311 Pupil Transportation Subsidy	612,925.17					
7312 Nonpublic and Charter School Pupil Transportation Subsidy	4,235.00					
7320 Rental and Sinking Fund Payments / Building Reimbursement Subsidy	162,699.88					
7330 Health Services (Medical, Dental, Nurse, Act 25)	11,341.00					
7340 State Property Tax Reduction Allocation	460,188.61					
7505 Ready to Learn Block Grant	147,924.00					
7506 PAsmart Grants	26,644.62					
7810 State Share of Social Security and Medicare Taxes	230,058.88					
7820 State Share of Retirement Contributions	1,140,122.52					
7000 Total Revenue from State Sources	\$7,142,907.99					

LEA : 112013054 Fairfield Area SD

Printed 1/4/2022 9:33:55 AM

	Capital Reserve (1431) (32)	Other Capital Projects Fund (39)	Debt Service (40)	Permanent (90)	Total
6000 Revenue from Local Sources					
6111 Current Real Estate Taxes					8,788,064.02
6112 Interim Real Estate Taxes					18,214.22
6113 Public Utility Realty Taxes					10,024.29
6114 Payments in Lieu of Current Taxes - State / Local					15,337.13
6151 Current Act 511 Earned Income Taxes					2,217,772.00
6153 Current Act 511 Real Estate Transfer Taxes					194,710.41
6154 Current Act 511 Amusement Taxes					13,453.78
6411 Delinquent Real Estate Taxes					255,110.15
6500 Earnings on Investments	406.02	908.53			37,257.17
6700 Revenues from LEA Activities					33,122.48
6821 State Revenue Received from Other Pennsylvania Public LEAs					11,093.00
6831 Federal Revenue Received from Other Pennsylvania Public LEAs					24,730.34
6832 Federal IDEA Revenue Received as Pass Through					119,857.00
6910 Rentals					12,579.00
6920 Contributions and Donations from Private Sources					24,068.67
6944 Receipts from Other LEAs in Pennsylvania - Education					48,218.00
6991 Refunds of a Prior Year Expenditure					745.78
6999 Other Revenues Not Specified Above					15,888.00
6000 Total Revenue from Local Sources	\$406.02	\$908.53			\$11,840,245.44
7000 Revenue from State Sources					
7111 Basic Education Funding-Formula					3,569,217.46
7160 Tuition for Orphans Subsidy					43,108.43
7220 Vocational Education					17,776.70
7271 Special Education funds for School-Aged Pupils					659,754.95
7299 Program Revenues Not Listed Previously in the 7200 Series					56,910.77
7311 Pupil Transportation Subsidy					612,925.17
7312 Nonpublic and Charter School Pupil Transportation Subsidy					4,235.00
7320 Rental and Sinking Fund Payments / Building Reimbursement Subsidy					162,699.88
7330 Health Services (Medical, Dental, Nurse, Act 25)					11,341.00
7340 State Property Tax Reduction Allocation					460,188.61
7505 Ready to Learn Block Grant					147,924.00
7506 PAsmart Grants					26,644.62
7810 State Share of Social Security and Medicare Taxes					230,058.88
7820 State Share of Retirement Contributions					1,140,122.52
7000 Total Revenue from State Sources					\$7,142,907.99

LEA : 112013054 Fairfield Area SD

Printed 1/4/2022 9:33:55 AM

	<u>General Fund (10)</u>	<u>Student Sponsored Activity Fund (21)</u>	<u>Public Purpose Trust (27)</u>	<u>Other Compt Approved (28)</u>	<u>Athletic / Activity (29)</u>	<u>Capital Reserve (690, 1850) (31)</u>
8000 Revenue from Federal Sources						
8514 NCLB, Title I - Improving the Academic Achievement of the Disadvantaged	95,236.94					
8515 NCLB, Title II - Preparing, Training and Recruiting High Quality Teachers and Principals	25,959.00					
8517 NCLB, Title IV - 21st Century Schools	10,000.00					
8521 Vocational Education - Operating Expenditures	11,511.00					
8741 Elementary and Secondary School Emergency Relief Fund (ESSER)	100,122.36					
8000 Total Revenue from Federal Sources	\$242,829.30					
9000 Other Financing Sources						
9120 Proceeds from Refunding of Bonds	11,222,406.00					
9130 Bond Premiums	1,618,850.00					
9310 General Fund Transfers						
9000 Total Other Financing Sources	\$12,841,256.00					
Total From All Sources	\$32,065,924.18					

LEA : 112013054 Fairfield Area SD

Printed 1/4/2022 9:33:55 AM

	<u>Capital Reserve</u> <u>(1431) (32)</u>	<u>Other Capital</u> <u>Projects Fund (39)</u>	<u>Debt Service (40)</u>	<u>Permanent (90)</u>	<u>Total</u>
8000 Revenue from Federal Sources					
8514 NCLB, Title I - Improving the Academic Achievement of the Disadvantaged					95,236.94
8515 NCLB, Title II - Preparing, Training and Recruiting High Quality Teachers and Principals					25,959.00
8517 NCLB, Title IV - 21st Century Schools					10,000.00
8521 Vocational Education - Operating Expenditures					11,511.00
8741 Elementary and Secondary School Emergency Relief Fund (ESSER)					100,122.36
8000 Total Revenue from Federal Sources					\$242,829.30
9000 Other Financing Sources					
9120 Proceeds from Refunding of Bonds					11,222,406.00
9130 Bond Premiums					1,618,850.00
9310 General Fund Transfers		503,571.00			503,571.00
9000 Total Other Financing Sources		\$503,571.00			\$13,344,827.00
Total From All Sources	\$406.02	\$504,479.53			\$32,570,809.73

LEA : 112013054 Fairfield Area SD

Printed 1/4/2022 9:33:59 AM

	<u>General Fund (10)</u>	<u>Student Sponsored Activity Fund (21)</u>	<u>Public Purpose Trust (27)</u>	<u>Other Compt Approved (28)</u>	<u>Athletic / Activity (29)</u>	<u>Capital Reserve (690. 1850) (31)</u>
Revenue from Local Sources	11,838,930.89					
Revenue from State Sources	7,142,907.99					
Revenue from Federal Sources	242,829.30					
Other Financing Sources	12,841,256.00					
Total From All Sources	\$32,065,924.18					

LEA : 112013054 Fairfield Area SD

Printed 1/4/2022 9:33:59 AM

	<u>Capital Reserve (1431)</u> <u>(32)</u>	<u>Other Capital Projects</u> <u>Fund (39)</u>	<u>Debt Service (40)</u>	<u>Permanent (90)</u>	<u>Total</u>
Revenue from Local Sources	406.02	908.53			11,840,245.44
Revenue from State Sources					7,142,907.99
Revenue from Federal Sources					242,829.30
Other Financing Sources		503,571.00			13,344,827.00
Total From All Sources	\$406.02	\$504,479.53			\$32,570,809.73

LEA : 112013054 Fairfield Area SD

Printed 1/4/2022 9:34:07 AM

General Fund (10)	
1000 Instruction	<u>Total</u>
100 <u>Personnel Services – Salaries</u>	
100 Personnel Services – Salaries	4,824,753.53
Total Personnel Services – Salaries	\$4,824,753.53
200 <u>Personnel Services – Employee Benefits</u>	
210 Group Insurance – Contracted Provider	7,003.46
220 Social Security Contributions	352,253.89
230 PSERS Retirement Contributions	1,622,588.51
260 Workers' Compensation	10,328.67
270 Group Insurance – Self-Insurance	583,548.72
292 Health Savings Accounts	85,431.21
Total Personnel Services – Employee Benefits	\$2,661,154.46
300 <u>Purchased Professional and Technical Services</u>	
322 Professional Educational Services – Ius	789,957.16
323 Professional Educational Services – Other Educational Agencies	102,311.41
329 Professional Educational Services – Other	88,244.60
330 Other Professional Services	3,728.00
Total Purchased Professional and Technical Services	\$984,241.17
400 <u>Purchased Property Services</u>	
430 Repairs and Maintenance Services	10,865.76
Total Purchased Property Services	\$10,865.76
500 <u>Other Purchased Services</u>	
510 Student Transportation Services	3,292.55
561 Tuition To Other School Districts Within the State	183,126.94
562 Tuition To Pennsylvania Charter Schools	718,158.55
564 Tuition To Career and Technology Centers	145,818.14
566 Tuition To Institutions of Higher Education and Technical Institutes	6,000.00
568 Tuition To Private Residential Rehabilitative Institutions (PRRI) [In-State] and Detention Centers	30,871.21
580 Travel	942.09
Total Other Purchased Services	\$1,088,209.48
600 <u>Supplies</u>	
610 General Supplies	95,685.86
640 Books and Periodicals	32,240.97
650 Supplies & Fees – Technology Related	71,830.41
Total Supplies	\$199,757.24
800 <u>Other Objects</u>	
810 Dues and Fees	2,089.75
Total Other Objects	\$2,089.75
Total 1000 Instruction	\$9,771,071.39

LEA : 112013054 Fairfield Area SD

Printed 1/4/2022 9:34:07 AM

General Fund (10)

1100 Regular Programs – Elementary / Secondary	Elementary	Secondary	Federal	Total
100 Personnel Services – Salaries				
100 Personnel Services – Salaries	1,742,574.82	1,712,701.13	157,784.30	3,613,060.25
Total Personnel Services – Salaries	\$1,742,574.82	\$1,712,701.13	\$157,784.30	\$3,613,060.25
200 Personnel Services – Employee Benefits				
210 Group Insurance – Contracted Provider	2,466.54	2,518.71	183.11	5,168.36
220 Social Security Contributions	129,072.56	124,519.91	9,322.61	262,915.08
230 PSERS Retirement Contributions	593,606.83	572,088.63	41,794.89	1,207,490.35
260 Workers' Compensation	597.97	103.41	913.74	1,615.12
270 Group Insurance – Self-Insurance	212,851.96	166,793.17	1,878.93	381,524.06
292 Health Savings Accounts	33,195.48	31,995.48		65,190.96
Total Personnel Services – Employee Benefits	\$971,791.34	\$898,019.31	\$54,093.28	\$1,923,903.93
300 Purchased Professional and Technical Services				
329 Professional Educational Services – Other	46,042.10	42,202.50		88,244.60
330 Other Professional Services	471.50	471.50		943.00
Total Purchased Professional and Technical Services	\$46,513.60	\$42,674.00		\$89,187.60
400 Purchased Property Services				
430 Repairs and Maintenance Services	4,661.82	5,388.94		10,050.76
Total Purchased Property Services	\$4,661.82	\$5,388.94		\$10,050.76
500 Other Purchased Services				
510 Student Transportation Services	238.56	1,395.71		1,634.27
561 Tuition To Other School Districts Within the State	7,665.53	17,491.05		25,156.58
562 Tuition To Pennsylvania Charter Schools	463,272.86	256,192.23		719,465.09
568 Tuition To Private Residential Rehabilitative Institutions (PRRI) [In-State] and Detention Centers		30,871.21		30,871.21
580 Travel		219.98		219.98
Total Other Purchased Services	\$471,176.95	\$306,170.18		\$777,347.13
600 Supplies				
610 General Supplies	42,060.68	39,701.43		81,762.11
640 Books and Periodicals	14,533.70	2,972.00	486.50	17,992.20
650 Supplies & Fees – Technology Related	26,625.45	14,986.96		41,612.41
Total Supplies	\$83,219.83	\$57,660.39	\$486.50	\$141,366.72
800 Other Objects				
810 Dues and Fees	255.00	1,290.75		1,545.75
Total Other Objects	\$255.00	\$1,290.75		\$1,545.75
Total 1100 Regular Programs – Elementary / Secondary	\$3,320,193.36	\$3,023,904.70	\$212,364.08	\$6,556,462.14

LEA : 112013054 Fairfield Area SD

Printed 1/4/2022 9:34:07 AM

General Fund (10)				
1110 Regular Programs	<u>Elementary</u>	<u>Secondary</u>	<u>Federal</u>	<u>Total</u>
100 <u>Personnel Services – Salaries</u>				
100 Personnel Services – Salaries	1,742,574.82	1,712,701.13		3,455,275.95
Total Personnel Services – Salaries	\$1,742,574.82	\$1,712,701.13		\$3,455,275.95
200 <u>Personnel Services – Employee Benefits</u>				
210 Group Insurance – Contracted Provider	2,466.54	2,518.71		4,985.25
220 Social Security Contributions	129,072.56	124,519.91		253,592.47
230 PSERS Retirement Contributions	593,606.83	572,088.63		1,165,695.46
260 Workers' Compensation	597.97	103.41		701.38
270 Group Insurance – Self-Insurance	212,851.96	166,793.17		379,645.13
292 Health Savings Accounts	33,195.48	31,995.48		65,190.96
Total Personnel Services – Employee Benefits	\$971,791.34	\$898,019.31		\$1,869,810.65
300 <u>Purchased Professional and Technical Services</u>				
329 Professional Educational Services – Other	46,042.10	42,202.50		88,244.60
330 Other Professional Services	471.50	471.50		943.00
Total Purchased Professional and Technical Services	\$46,513.60	\$42,674.00		\$89,187.60
400 <u>Purchased Property Services</u>				
430 Repairs and Maintenance Services	4,661.82	5,388.94		10,050.76
Total Purchased Property Services	\$4,661.82	\$5,388.94		\$10,050.76
500 <u>Other Purchased Services</u>				
510 Student Transportation Services	238.56	1,395.71		1,634.27
561 Tuition To Other School Districts Within the State	7,665.53	17,491.05		25,156.58
562 Tuition To Pennsylvania Charter Schools	463,272.86	256,192.23		719,465.09
568 Tuition To Private Residential Rehabilitative Institutions (PRRI) [In-State] and Detention Centers		30,871.21		30,871.21
580 Travel		219.98		219.98
Total Other Purchased Services	\$471,176.95	\$306,170.18		\$777,347.13
600 <u>Supplies</u>				
610 General Supplies	42,060.68	39,701.43		81,762.11
640 Books and Periodicals	14,533.70	2,972.00		17,505.70
650 Supplies & Fees – Technology Related	26,625.45	14,986.96		41,612.41
Total Supplies	\$83,219.83	\$57,660.39		\$140,880.22
800 <u>Other Objects</u>				
810 Dues and Fees	255.00	1,290.75		1,545.75
Total Other Objects	\$255.00	\$1,290.75		\$1,545.75
Total 1110 Regular Programs	\$3,320,193.36	\$3,023,904.70		\$6,344,098.06

LEA : 112013054 Fairfield Area SD

Printed 1/4/2022 9:34:07 AM

General Fund (10)

1190 Federally-Funded Regular Programs	<u>Elementary</u>	<u>Secondary</u>	<u>Federal</u>	<u>Total</u>
100 <u>Personnel Services – Salaries</u>				
100 Personnel Services – Salaries			157,784.30	157,784.30
Total Personnel Services – Salaries			\$157,784.30	\$157,784.30
200 <u>Personnel Services – Employee Benefits</u>				
210 Group Insurance – Contracted Provider			183.11	183.11
220 Social Security Contributions			9,322.61	9,322.61
230 PSERS Retirement Contributions			41,794.89	41,794.89
260 Workers' Compensation			913.74	913.74
270 Group Insurance – Self-Insurance			1,878.93	1,878.93
Total Personnel Services – Employee Benefits			\$54,093.28	\$54,093.28
600 <u>Supplies</u>				
640 Books and Periodicals			486.50	486.50
Total Supplies			\$486.50	\$486.50
Total 1190 Federally-Funded Regular Programs			\$212,364.08	\$212,364.08

LEA : 112013054 Fairfield Area SD

Printed 1/4/2022 9:34:07 AM

General Fund (10)

1200 Special Programs – Elementary / Secondary	Elementary	Secondary	Federal	Total
100 Personnel Services – Salaries				
100 Personnel Services – Salaries	403,186.92	343,370.86		746,557.78
Total Personnel Services – Salaries	\$403,186.92	\$343,370.86		\$746,557.78
200 Personnel Services – Employee Benefits				
210 Group Insurance – Contracted Provider	594.29	549.55		1,143.84
220 Social Security Contributions	29,521.16	25,480.82		55,001.98
230 PSERS Retirement Contributions	137,806.35	117,729.96		255,536.31
260 Workers' Compensation	3,022.45	2,202.95		5,225.40
270 Group Insurance – Self-Insurance	64,584.98	58,918.10		123,503.08
292 Health Savings Accounts	6,581.50	5,758.75		12,340.25
Total Personnel Services – Employee Benefits	\$242,110.73	\$210,640.13		\$452,750.86
300 Purchased Professional and Technical Services				
322 Professional Educational Services – Ius	345,431.68	369,034.20	75,491.28	789,957.16
323 Professional Educational Services – Other Educational Agencies	7,109.10	95,202.31		102,311.41
330 Other Professional Services	2,500.00			2,500.00
Total Purchased Professional and Technical Services	\$355,040.78	\$464,236.51	\$75,491.28	\$894,768.57
500 Other Purchased Services				
510 Student Transportation Services		866.28		866.28
561 Tuition To Other School Districts Within the State	29,266.86	52,788.78	56,944.72	139,000.36
562 Tuition To Pennsylvania Charter Schools	(1,306.54)			(1,306.54)
Total Other Purchased Services	\$27,960.32	\$53,655.06	\$56,944.72	\$138,560.10
600 Supplies				
610 General Supplies	376.63			376.63
640 Books and Periodicals	217.80	11,953.77		12,171.57
650 Supplies & Fees – Technology Related	1,584.00	1,335.00	3,250.00	6,169.00
Total Supplies	\$2,178.43	\$13,288.77	\$3,250.00	\$18,717.20
800 Other Objects				
810 Dues and Fees		304.00		304.00
Total Other Objects		\$304.00		\$304.00
Total 1200 Special Programs – Elementary / Secondary	\$1,030,477.18	\$1,085,495.33	\$135,686.00	\$2,251,658.51

LEA : 112013054 Fairfield Area SD

Printed 1/4/2022 9:34:07 AM

General Fund (10)				
1210 Life Skills Support	<u>Elementary</u>	<u>Secondary</u>	<u>Federal</u>	<u>Total</u>
300 <u>Purchased Professional and Technical Services</u>				
322 Professional Educational Services – Ius			62,912.28	62,912.28
323 Professional Educational Services – Other Educational Agencies	4,409.10	8,818.20		13,227.30
Total Purchased Professional and Technical Services	\$4,409.10	\$8,818.20	\$62,912.28	\$76,139.58
600 <u>Supplies</u>				
650 Supplies & Fees – Technology Related			3,250.00	3,250.00
Total Supplies			\$3,250.00	\$3,250.00
Total 1210 Life Skills Support	\$4,409.10	\$8,818.20	\$66,162.28	\$79,389.58

LEA : 112013054 Fairfield Area SD

Printed 1/4/2022 9:34:07 AM

General Fund (10)

1220 Sensory Support

	<u>Elementary</u>	<u>Secondary</u>	<u>Federal</u>	<u>Total</u>
300 <u>Purchased Professional and Technical Services</u>				
322 Professional Educational Services – Ius	83,473.49	97,913.69		181,387.18
323 Professional Educational Services – Other Educational Agencies	2,700.00	4,103.33		6,803.33
Total Purchased Professional and Technical Services	\$86,173.49	\$102,017.02		\$188,190.51
Total 1220 Sensory Support	\$86,173.49	\$102,017.02		\$188,190.51

LEA : 112013054 Fairfield Area SD

Printed 1/4/2022 9:34:07 AM

General Fund (10)				
1230 Emotional Support	<u>Elementary</u>	<u>Secondary</u>	<u>Federal</u>	<u>Total</u>
300 <u>Purchased Professional and Technical Services</u>				
322 Professional Educational Services – Ius	238,712.19	155,403.51		394,115.70
323 Professional Educational Services – Other Educational Agencies		59,836.78		59,836.78
Total Purchased Professional and Technical Services	\$238,712.19	\$215,240.29		\$453,952.48
500 <u>Other Purchased Services</u>				
561 Tuition To Other School Districts Within the State	28,173.58	27,560.00		55,733.58
Total Other Purchased Services	\$28,173.58	\$27,560.00		\$55,733.58
600 <u>Supplies</u>				
640 Books and Periodicals	217.80			217.80
Total Supplies	\$217.80			\$217.80
Total 1230 Emotional Support	\$267,103.57	\$242,800.29		\$509,903.86

LEA : 112013054 Fairfield Area SD

Printed 1/4/2022 9:34:07 AM

General Fund (10)				
1240 Academic Support	<u>Elementary</u>	<u>Secondary</u>	<u>Federal</u>	<u>Total</u>
100 <u>Personnel Services – Salaries</u>				
100 Personnel Services – Salaries	403,186.92	343,370.86		746,557.78
Total Personnel Services – Salaries	\$403,186.92	\$343,370.86		\$746,557.78
200 <u>Personnel Services – Employee Benefits</u>				
210 Group Insurance – Contracted Provider	594.29	549.55		1,143.84
220 Social Security Contributions	29,521.16	25,480.82		55,001.98
230 PSERS Retirement Contributions	137,806.35	117,729.96		255,536.31
260 Workers' Compensation	3,022.45	2,202.95		5,225.40
270 Group Insurance – Self-Insurance	64,584.98	58,918.10		123,503.08
292 Health Savings Accounts	6,581.50	5,758.75		12,340.25
Total Personnel Services – Employee Benefits	\$242,110.73	\$210,640.13		\$452,750.86
300 <u>Purchased Professional and Technical Services</u>				
330 Other Professional Services	2,500.00			2,500.00
Total Purchased Professional and Technical Services	\$2,500.00			\$2,500.00
500 <u>Other Purchased Services</u>				
510 Student Transportation Services		866.28		866.28
561 Tuition To Other School Districts Within the State		4,428.78		4,428.78
562 Tuition To Pennsylvania Charter Schools	(1,306.54)			(1,306.54)
Total Other Purchased Services	(\$1,306.54)	\$5,295.06		\$3,988.52
600 <u>Supplies</u>				
610 General Supplies	376.63			376.63
640 Books and Periodicals		11,953.77		11,953.77
650 Supplies & Fees – Technology Related	1,584.00	1,335.00		2,919.00
Total Supplies	\$1,960.63	\$13,288.77		\$15,249.40
800 <u>Other Objects</u>				
810 Dues and Fees		304.00		304.00
Total Other Objects		\$304.00		\$304.00
Total 1240 Academic Support	\$648,451.74	\$572,898.82		\$1,221,350.56

LEA : 112013054 Fairfield Area SD

Printed 1/4/2022 9:34:07 AM

General Fund (10)				
1241 Learning Support – Public	<u>Elementary</u>	<u>Secondary</u>	<u>Federal</u>	<u>Total</u>
100 <u>Personnel Services – Salaries</u>				
100 Personnel Services – Salaries	403,186.92	293,839.86		697,026.78
Total Personnel Services – Salaries	\$403,186.92	\$293,839.86		\$697,026.78
200 <u>Personnel Services – Employee Benefits</u>				
210 Group Insurance – Contracted Provider	594.29	475.55		1,069.84
220 Social Security Contributions	29,521.16	21,856.82		51,377.98
230 PSERS Retirement Contributions	137,806.35	100,737.96		238,544.31
260 Workers' Compensation	3,022.45	2,202.95		5,225.40
270 Group Insurance – Self-Insurance	64,584.98	51,594.10		116,179.08
292 Health Savings Accounts	6,581.50	4,880.75		11,462.25
Total Personnel Services – Employee Benefits	\$242,110.73	\$181,748.13		\$423,858.86
300 <u>Purchased Professional and Technical Services</u>				
330 Other Professional Services	2,500.00			2,500.00
Total Purchased Professional and Technical Services	\$2,500.00			\$2,500.00
500 <u>Other Purchased Services</u>				
510 Student Transportation Services		82.28		82.28
561 Tuition To Other School Districts Within the State		4,428.78		4,428.78
562 Tuition To Pennsylvania Charter Schools	(1,306.54)			(1,306.54)
Total Other Purchased Services	(\$1,306.54)	\$4,511.06		\$3,204.52
600 <u>Supplies</u>				
610 General Supplies	376.63			376.63
640 Books and Periodicals		11,953.77		11,953.77
650 Supplies & Fees – Technology Related	1,584.00	1,335.00		2,919.00
Total Supplies	\$1,960.63	\$13,288.77		\$15,249.40
Total 1241 Learning Support – Public	\$648,451.74	\$493,387.82		\$1,141,839.56

LEA : 112013054 Fairfield Area SD

Printed 1/4/2022 9:34:07 AM

General Fund (10)

1243 Gifted Support

	Elementary	Secondary	Federal	Total
100 <u>Personnel Services – Salaries</u>				
100 Personnel Services – Salaries		49,531.00		49,531.00
Total Personnel Services – Salaries		\$49,531.00		\$49,531.00
200 <u>Personnel Services – Employee Benefits</u>				
210 Group Insurance – Contracted Provider		74.00		74.00
220 Social Security Contributions		3,624.00		3,624.00
230 PSERS Retirement Contributions		16,992.00		16,992.00
270 Group Insurance – Self-Insurance		7,324.00		7,324.00
292 Health Savings Accounts		878.00		878.00
Total Personnel Services – Employee Benefits		\$28,892.00		\$28,892.00
500 <u>Other Purchased Services</u>				
510 Student Transportation Services		784.00		784.00
Total Other Purchased Services		\$784.00		\$784.00
800 <u>Other Objects</u>				
810 Dues and Fees		304.00		304.00
Total Other Objects		\$304.00		\$304.00
Total 1243 Gifted Support		\$79,511.00		\$79,511.00

LEA : 112013054 Fairfield Area SD

Printed 1/4/2022 9:34:07 AM

General Fund (10)				
1270 Multi-Handicapped Support	<u>Elementary</u>	<u>Secondary</u>	<u>Federal</u>	<u>Total</u>
300 <u>Purchased Professional and Technical Services</u>				
322 Professional Educational Services – Ius	22,946.00	115,194.00		138,140.00
323 Professional Educational Services – Other Educational Agencies		20,444.00		20,444.00
Total Purchased Professional and Technical Services	\$22,946.00	\$135,638.00		\$158,584.00
500 <u>Other Purchased Services</u>				
561 Tuition To Other School Districts Within the State	1,093.28	20,800.00	56,944.72	78,838.00
Total Other Purchased Services	\$1,093.28	\$20,800.00	\$56,944.72	\$78,838.00
Total 1270 Multi-Handicapped Support	\$24,039.28	\$156,438.00	\$56,944.72	\$237,422.00

LEA : 112013054 Fairfield Area SD

Printed 1/4/2022 9:34:07 AM

General Fund (10)

1280 Early Intervention Support

	<u>Elementary</u>	<u>Secondary</u>	<u>Federal</u>	<u>Total</u>
300 <u>Purchased Professional and Technical Services</u>				
322 Professional Educational Services – lus	300.00		12,579.00	12,879.00
Total Purchased Professional and Technical Services	\$300.00		\$12,579.00	\$12,879.00
Total 1280 Early Intervention Support	\$300.00		\$12,579.00	\$12,879.00

LEA : 112013054 Fairfield Area SD

Printed 1/4/2022 9:34:07 AM

General Fund (10)

1290 Special Programs - Other Support

	<u>Elementary</u>	<u>Secondary</u>	<u>Federal</u>	<u>Total</u>
300 <u>Purchased Professional and Technical Services</u>				
322 Professional Educational Services – Ius		523.00		523.00
323 Professional Educational Services – Other Educational Agencies		2,000.00		2,000.00
Total Purchased Professional and Technical Services		\$2,523.00		\$2,523.00
Total 1290 Special Programs - Other Support		\$2,523.00		\$2,523.00

LEA : 112013054 Fairfield Area SD

Printed 1/4/2022 9:34:07 AM

General Fund (10)

1300 Vocational Education

	Elementary	Secondary	Federal	Total
100 <u>Personnel Services – Salaries</u>				
100 Personnel Services – Salaries		426,868.50		426,868.50
Total Personnel Services – Salaries		\$426,868.50		\$426,868.50
200 <u>Personnel Services – Employee Benefits</u>				
210 Group Insurance – Contracted Provider		637.26		637.26
220 Social Security Contributions		31,705.32		31,705.32
230 PSERS Retirement Contributions		146,433.51		146,433.51
260 Workers' Compensation		3,201.40		3,201.40
270 Group Insurance – Self-Insurance		67,914.58		67,914.58
292 Health Savings Accounts		7,022.00		7,022.00
Total Personnel Services – Employee Benefits		\$256,914.07		\$256,914.07
400 <u>Purchased Property Services</u>				
430 Repairs and Maintenance Services		815.00		815.00
Total Purchased Property Services		\$815.00		\$815.00
500 <u>Other Purchased Services</u>				
510 Student Transportation Services		792.00		792.00
564 Tuition To Career and Technology Centers		145,818.14		145,818.14
566 Tuition To Institutions of Higher Education and Technical Institutes		6,000.00		6,000.00
580 Travel		722.11		722.11
Total Other Purchased Services		\$153,332.25		\$153,332.25
600 <u>Supplies</u>				
610 General Supplies		13,500.12		13,500.12
640 Books and Periodicals		1,360.20		1,360.20
650 Supplies & Fees – Technology Related		24,049.00		24,049.00
Total Supplies		\$38,909.32		\$38,909.32
800 <u>Other Objects</u>				
810 Dues and Fees		240.00		240.00
Total Other Objects		\$240.00		\$240.00
Total 1300 Vocational Education		\$877,079.14		\$877,079.14

LEA : 112013054 Fairfield Area SD

Printed 1/4/2022 9:34:07 AM

General Fund (10)				
1400 Other Instructional Programs – Elementary / Secondary	<u>Elementary</u>	<u>Secondary</u>	<u>Federal</u>	<u>Total</u>
100 <u>Personnel Services – Salaries</u>				
100 Personnel Services – Salaries	427.50	37,839.50		38,267.00
Total Personnel Services – Salaries	\$427.50	\$37,839.50		\$38,267.00
200 <u>Personnel Services – Employee Benefits</u>				
210 Group Insurance – Contracted Provider		54.00		54.00
220 Social Security Contributions	31.79	2,599.72		2,631.51
230 PSERS Retirement Contributions	146.59	12,981.75		13,128.34
260 Workers' Compensation	3.21	283.54		286.75
270 Group Insurance – Self-Insurance		10,607.00		10,607.00
292 Health Savings Accounts		878.00		878.00
Total Personnel Services – Employee Benefits	\$181.59	\$27,404.01		\$27,585.60
300 <u>Purchased Professional and Technical Services</u>				
330 Other Professional Services		285.00		285.00
Total Purchased Professional and Technical Services		\$285.00		\$285.00
500 <u>Other Purchased Services</u>				
561 Tuition To Other School Districts Within the State	6,000.00	12,970.00		18,970.00
Total Other Purchased Services	\$6,000.00	\$12,970.00		\$18,970.00
600 <u>Supplies</u>				
610 General Supplies		47.00		47.00
640 Books and Periodicals			717.00	717.00
Total Supplies		\$47.00	\$717.00	\$764.00
Total 1400 Other Instructional Programs – Elementary / Secondary	\$6,609.09	\$78,545.51	\$717.00	\$85,871.60

LEA : 112013054 Fairfield Area SD

Printed 1/4/2022 9:34:07 AM

General Fund (10)

1410 Drivers' Education

	Elementary	Secondary	Federal	Total
100 Personnel Services – Salaries				
100 Personnel Services – Salaries		36,032.00		36,032.00
Total Personnel Services – Salaries		\$36,032.00		\$36,032.00
200 Personnel Services – Employee Benefits				
210 Group Insurance – Contracted Provider		54.00		54.00
220 Social Security Contributions		2,467.00		2,467.00
230 PSERS Retirement Contributions		12,362.00		12,362.00
260 Workers' Compensation		270.00		270.00
270 Group Insurance – Self-Insurance		10,607.00		10,607.00
292 Health Savings Accounts		878.00		878.00
Total Personnel Services – Employee Benefits		\$26,638.00		\$26,638.00
600 Supplies				
610 General Supplies		47.00		47.00
Total Supplies		\$47.00		\$47.00
Total 1410 Drivers' Education		\$62,717.00		\$62,717.00

LEA : 112013054 Fairfield Area SD

Printed 1/4/2022 9:34:07 AM

General Fund (10)

1420 Summer School

	<u>Elementary</u>	<u>Secondary</u>	<u>Federal</u>	<u>Total</u>
500 <u>Other Purchased Services</u>				
561 Tuition To Other School Districts Within the State	6,000.00			6,000.00
Total Other Purchased Services	\$6,000.00			\$6,000.00
Total 1420 Summer School	\$6,000.00			\$6,000.00

LEA : 112013054 Fairfield Area SD

Printed 1/4/2022 9:34:07 AM

General Fund (10)

1430 Homebound Instruction	<u>Elementary</u>	<u>Secondary</u>	<u>Federal</u>	<u>Total</u>
100 <u>Personnel Services – Salaries</u>				
100 Personnel Services – Salaries	427.50	1,807.50		2,235.00
Total Personnel Services – Salaries	\$427.50	\$1,807.50		\$2,235.00
200 <u>Personnel Services – Employee Benefits</u>				
220 Social Security Contributions	31.79	132.72		164.51
230 PSERS Retirement Contributions	146.59	619.75		766.34
260 Workers’ Compensation	3.21	13.54		16.75
Total Personnel Services – Employee Benefits	\$181.59	\$766.01		\$947.60
300 <u>Purchased Professional and Technical Services</u>				
330 Other Professional Services		285.00		285.00
Total Purchased Professional and Technical Services		\$285.00		\$285.00
Total 1430 Homebound Instruction	\$609.09	\$2,858.51		\$3,467.60

LEA : 112013054 Fairfield Area SD

Printed 1/4/2022 9:34:07 AM

General Fund (10)

1440 Alternative Regular Education Programs

<u>Elementary</u>	<u>Secondary</u>	<u>Federal</u>	<u>Total</u>
-------------------	------------------	----------------	--------------

500 Other Purchased Services

561 Tuition To Other School Districts Within the State	12,970.00		12,970.00
--	-----------	--	-----------

Total Other Purchased Services	\$12,970.00		\$12,970.00
---------------------------------------	--------------------	--	--------------------

Total 1440 Alternative Regular Education Programs	\$12,970.00		\$12,970.00
--	--------------------	--	--------------------

LEA : 112013054 Fairfield Area SD

Printed 1/4/2022 9:34:07 AM

General Fund (10)

1441 Adjudicated / Court-Placed Programs

<u>Elementary</u>	<u>Secondary</u>	<u>Federal</u>	<u>Total</u>
-------------------	------------------	----------------	--------------

500 Other Purchased Services

561 Tuition To Other School Districts Within the State	12,970.00		12,970.00
--	-----------	--	-----------

Total Other Purchased Services	\$12,970.00		\$12,970.00
---------------------------------------	--------------------	--	--------------------

Total 1441 Adjudicated / Court-Placed Programs	\$12,970.00		\$12,970.00
---	--------------------	--	--------------------

LEA : 112013054 Fairfield Area SD

Printed 1/4/2022 9:34:07 AM

General Fund (10)

1490 Additional Other Instructional Programs	<u>Elementary</u>	<u>Secondary</u>	<u>Federal</u>	<u>Total</u>
600 <u>Supplies</u>				
640 Books and Periodicals			717.00	717.00
Total Supplies			\$717.00	\$717.00
Total 1490 Additional Other Instructional Programs			\$717.00	\$717.00

LEA : 112013054 Fairfield Area SD

Printed 1/4/2022 9:34:15 AM

General Fund (10)

2000 Support Services

Total

100	<u>Personnel Services – Salaries</u>	
100	Personnel Services – Salaries	1,779,754.90
Total Personnel Services – Salaries		\$1,779,754.90
200	<u>Personnel Services – Employee Benefits</u>	
210	Group Insurance – Contracted Provider	3,238.03
220	Social Security Contributions	132,188.72
230	PSERS Retirement Contributions	662,402.29
240	Tuition Reimbursement	46,485.47
250	Unemployment Compensation	22.85
260	Workers' Compensation	13,141.94
270	Group Insurance – Self-Insurance	416,227.10
292	Health Savings Accounts	47,464.00
Total Personnel Services – Employee Benefits		\$1,321,170.40
300	<u>Purchased Professional and Technical Services</u>	
322	Professional Educational Services – Ius	163,503.00
323	Professional Educational Services – Other Educational Agencies	24,972.00
329	Professional Educational Services – Other	1,360.00
330	Other Professional Services	170,235.81
340	Technical Services	50,382.40
350	Security / Safety Services	38,367.00
360	Employee Training and Development Services	3,644.00
Total Purchased Professional and Technical Services		\$452,464.21
400	<u>Purchased Property Services</u>	
410	Cleaning Services	10,734.00
420	Utility Services	28,156.28
430	Repairs and Maintenance Services	122,952.82
440	Rentals	2,641.00
Total Purchased Property Services		\$164,484.10
500	<u>Other Purchased Services</u>	
510	Student Transportation Services	42.35
513	Contracted Carriers	796,455.00
516	Student Transportation Services From the IU	23,827.00
520	Insurance – General	47,724.00
522	Automotive Liability Insurance	3,062.00
530	Communications	13,984.56
550	Printing and Binding	3,803.88
580	Travel	3,749.96
595	IU Payments By Withholding	8,133.20
596	Direct Payments To Intermediate Units	1.00
Total Other Purchased Services		\$900,782.95
600	<u>Supplies</u>	
610	General Supplies	201,081.55
620	Energy	229,620.00
640	Books and Periodicals	3,269.37

LEA : 112013054 Fairfield Area SD

Printed 1/4/2022 9:34:15 AM

General Fund (10)

2000 Support Services

Total

600 <u>Supplies</u>	
650 Supplies & Fees – Technology Related	287,872.62
Total Supplies	\$721,843.54
700 <u>Property</u>	
752 Capital Equipment – Original and Additional	38,100.00
Total Property	\$38,100.00
800 <u>Other Objects</u>	
810 Dues and Fees	230,035.87
820 Claims and Judgments Against the LEA	1,635.00
Total Other Objects	\$231,670.87
Total 2000 Support Services	\$5,610,270.97

LEA : 112013054 Fairfield Area SD

Printed 1/4/2022 9:34:15 AM

General Fund (10)

2100 Support Services – Students	Elementary	Secondary	Federal	Total
100 <u>Personnel Services – Salaries</u>				
100 Personnel Services – Salaries	139,504.22	127,237.37		266,741.59
Total Personnel Services – Salaries	\$139,504.22	\$127,237.37		\$266,741.59
200 <u>Personnel Services – Employee Benefits</u>				
210 Group Insurance – Contracted Provider	208.55	184.21		392.76
220 Social Security Contributions	10,302.69	9,373.27		19,675.96
230 PSERS Retirement Contributions	47,859.63	43,650.35		91,509.98
260 Workers' Compensation	1,046.50	953.89		2,000.39
270 Group Insurance – Self-Insurance	34,093.51	39,650.99		73,744.50
292 Health Savings Accounts	3,510.50	3,510.50		7,021.00
Total Personnel Services – Employee Benefits	\$97,021.38	\$97,323.21		\$194,344.59
300 <u>Purchased Professional and Technical Services</u>				
330 Other Professional Services		11,135.00		11,135.00
Total Purchased Professional and Technical Services		\$11,135.00		\$11,135.00
500 <u>Other Purchased Services</u>				
510 Student Transportation Services		42.35		42.35
580 Travel		647.84		1,164.84
Total Other Purchased Services		\$690.19		\$1,207.19
600 <u>Supplies</u>				
610 General Supplies	216.41	4,767.89		4,984.30
640 Books and Periodicals	6.99	1,549.48		1,556.47
650 Supplies & Fees – Technology Related	6,012.50	3,500.00		90,897.50
Total Supplies	\$6,235.90	\$9,817.37		\$97,438.27
800 <u>Other Objects</u>				
810 Dues and Fees	228.50	486.40		714.90
Total Other Objects	\$228.50	\$486.40		\$714.90
Total 2100 Support Services – Students	\$242,990.00	\$246,689.54		\$571,581.54

LEA : 112013054 Fairfield Area SD

Printed 1/4/2022 9:34:15 AM

General Fund (10)				
2120 Guidance Services	<u>Elementary</u>	<u>Secondary</u>	<u>Federal</u>	<u>Total</u>
100 <u>Personnel Services – Salaries</u>				
100 Personnel Services – Salaries	104,472.74	92,204.85		196,677.59
Total Personnel Services – Salaries	\$104,472.74	\$92,204.85		\$196,677.59
200 <u>Personnel Services – Employee Benefits</u>				
210 Group Insurance – Contracted Provider	156.21	131.87		288.08
220 Social Security Contributions	7,668.26	6,737.29		14,405.55
230 PSERS Retirement Contributions	35,841.39	31,631.87		67,473.26
260 Workers' Compensation	783.64	691.29		1,474.93
270 Group Insurance – Self-Insurance	26,264.76	31,821.99		58,086.75
292 Health Savings Accounts	2,632.50	2,632.50		5,265.00
Total Personnel Services – Employee Benefits	\$73,346.76	\$73,646.81		\$146,993.57
500 <u>Other Purchased Services</u>				
510 Student Transportation Services		42.35		42.35
580 Travel		647.84		647.84
Total Other Purchased Services		\$690.19		\$690.19
600 <u>Supplies</u>				
610 General Supplies		4,696.80		4,696.80
640 Books and Periodicals	6.99	1,549.48		1,556.47
650 Supplies & Fees – Technology Related	6,012.50	3,500.00		9,512.50
Total Supplies	\$6,019.49	\$9,746.28		\$15,765.77
800 <u>Other Objects</u>				
810 Dues and Fees	228.50	486.40		714.90
Total Other Objects	\$228.50	\$486.40		\$714.90
Total 2120 Guidance Services	\$184,067.49	\$176,774.53		\$360,842.02

LEA : 112013054 Fairfield Area SD

Printed 1/4/2022 9:34:15 AM

General Fund (10)				
2140 Psychological Services	<u>Elementary</u>	<u>Secondary</u>	<u>Federal</u>	<u>Total</u>
100 <u>Personnel Services – Salaries</u>				
100 Personnel Services – Salaries	35,031.48	35,032.52		70,064.00
Total Personnel Services – Salaries	\$35,031.48	\$35,032.52		\$70,064.00
200 <u>Personnel Services – Employee Benefits</u>				
210 Group Insurance – Contracted Provider	52.34	52.34		104.68
220 Social Security Contributions	2,634.43	2,635.98		5,270.41
230 PSERS Retirement Contributions	12,018.24	12,018.48		24,036.72
260 Workers' Compensation	262.86	262.60		525.46
270 Group Insurance – Self-Insurance	7,828.75	7,829.00		15,657.75
292 Health Savings Accounts	878.00	878.00		1,756.00
Total Personnel Services – Employee Benefits	\$23,674.62	\$23,676.40		\$47,351.02
300 <u>Purchased Professional and Technical Services</u>				
330 Other Professional Services		11,135.00		11,135.00
Total Purchased Professional and Technical Services		\$11,135.00		\$11,135.00
600 <u>Supplies</u>				
610 General Supplies	216.41	71.09		287.50
Total Supplies	\$216.41	\$71.09		\$287.50
Total 2140 Psychological Services	\$58,922.51	\$69,915.01		\$128,837.52

LEA : 112013054 Fairfield Area SD

Printed 1/4/2022 9:34:15 AM

General Fund (10)

2170 Student Accounting Services	<u>Elementary</u>	<u>Secondary</u>	<u>Federal</u>	<u>Total</u>
500 <u>Other Purchased Services</u>				
580 Travel				517.00
Total Other Purchased Services				\$517.00
600 <u>Supplies</u>				
650 Supplies & Fees – Technology Related				81,385.00
Total Supplies				\$81,385.00
Total 2170 Student Accounting Services				\$81,902.00

LEA : 112013054 Fairfield Area SD

Printed 1/4/2022 9:34:15 AM

General Fund (10)				
2200 Support Services – Instructional Staff	<u>Elementary</u>	<u>Secondary</u>	<u>Federal</u>	<u>Total</u>
100 <u>Personnel Services – Salaries</u>				
100 Personnel Services – Salaries	43,440.72	60,949.07		104,389.79
Total Personnel Services – Salaries	\$43,440.72	\$60,949.07		\$104,389.79
200 <u>Personnel Services – Employee Benefits</u>				
210 Group Insurance – Contracted Provider	52.87	62.19		115.06
220 Social Security Contributions	3,274.64	4,513.21		7,787.85
230 PSERS Retirement Contributions	14,897.74	20,906.73		35,804.47
240 Tuition Reimbursement	20,390.77	26,094.70		46,485.47
250 Unemployment Compensation		22.85		22.85
260 Workers' Compensation	325.55	414.52	20.00	760.07
270 Group Insurance – Self-Insurance	5,303.65	15,910.85		21,214.50
292 Health Savings Accounts	2,340.00	1,170.00		3,510.00
Total Personnel Services – Employee Benefits	\$46,585.22	\$69,095.05	\$20.00	\$115,700.27
300 <u>Purchased Professional and Technical Services</u>				
322 Professional Educational Services – Ius	231.00			231.00
329 Professional Educational Services – Other	680.00	680.00		1,360.00
360 Employee Training and Development Services	3,644.00			3,644.00
Total Purchased Professional and Technical Services	\$4,555.00	\$680.00		\$5,235.00
400 <u>Purchased Property Services</u>				
430 Repairs and Maintenance Services	50.91	90.91		141.82
Total Purchased Property Services	\$50.91	\$90.91		\$141.82
500 <u>Other Purchased Services</u>				
580 Travel	47.19	47.19		94.38
Total Other Purchased Services	\$47.19	\$47.19		\$94.38
600 <u>Supplies</u>				
610 General Supplies	7,308.78	1,493.93		8,802.71
640 Books and Periodicals	144.75	239.15		383.90
650 Supplies & Fees – Technology Related	3,705.12	4,298.06		8,003.18
Total Supplies	\$11,158.65	\$6,031.14		\$17,189.79
Total 2200 Support Services – Instructional Staff	\$105,837.69	\$136,893.36	\$20.00	\$242,751.05

LEA : 112013054 Fairfield Area SD

Printed 1/4/2022 9:34:15 AM

General Fund (10)				
2250 School Library Services	<u>Elementary</u>	<u>Secondary</u>	<u>Federal</u>	<u>Total</u>
100 <u>Personnel Services – Salaries</u>				
100 Personnel Services – Salaries	41,940.72	55,252.99		97,193.71
Total Personnel Services – Salaries	\$41,940.72	\$55,252.99		\$97,193.71
200 <u>Personnel Services – Employee Benefits</u>				
210 Group Insurance – Contracted Provider	52.87	62.19		115.06
220 Social Security Contributions	3,161.64	4,086.43		7,248.07
230 PSERS Retirement Contributions	14,383.74	18,953.23		33,336.97
260 Workers' Compensation	314.55	414.52		729.07
270 Group Insurance – Self-Insurance	5,303.65	15,910.85		21,214.50
292 Health Savings Accounts	2,340.00	1,170.00		3,510.00
Total Personnel Services – Employee Benefits	\$25,556.45	\$40,597.22		\$66,153.67
400 <u>Purchased Property Services</u>				
430 Repairs and Maintenance Services	50.91	90.91		141.82
Total Purchased Property Services	\$50.91	\$90.91		\$141.82
500 <u>Other Purchased Services</u>				
580 Travel	47.19	47.19		94.38
Total Other Purchased Services	\$47.19	\$47.19		\$94.38
600 <u>Supplies</u>				
610 General Supplies	2,237.82	1,048.91		3,286.73
640 Books and Periodicals	144.75	239.15		383.90
650 Supplies & Fees – Technology Related	3,705.12	4,298.06		8,003.18
Total Supplies	\$6,087.69	\$5,586.12		\$11,673.81
Total 2250 School Library Services	\$73,682.96	\$101,574.43		\$175,257.39

LEA : 112013054 Fairfield Area SD

Printed 1/4/2022 9:34:15 AM

General Fund (10)

2260 Instruction and Curriculum Development Services	<u>Elementary</u>	<u>Secondary</u>	<u>Federal</u>	<u>Total</u>
100 <u>Personnel Services – Salaries</u>				
100 Personnel Services – Salaries	1,500.00	2,650.00		4,150.00
Total Personnel Services – Salaries	\$1,500.00	\$2,650.00		\$4,150.00
200 <u>Personnel Services – Employee Benefits</u>				
220 Social Security Contributions	113.00	199.00		312.00
230 PSERS Retirement Contributions	514.00	909.00		1,423.00
260 Workers’ Compensation	11.00		20.00	31.00
Total Personnel Services – Employee Benefits	\$638.00	\$1,108.00	\$20.00	\$1,766.00
Total 2260 Instruction and Curriculum Development Services	\$2,138.00	\$3,758.00	\$20.00	\$5,916.00

LEA : 112013054 Fairfield Area SD

Printed 1/4/2022 9:34:15 AM

General Fund (10)

2270 Instructional Staff Professional Development Services	Elementary	Secondary	Federal	Total
100 <u>Personnel Services – Salaries</u>				
100 Personnel Services – Salaries		3,046.08		3,046.08
Total Personnel Services – Salaries		\$3,046.08		\$3,046.08
200 <u>Personnel Services – Employee Benefits</u>				
220 Social Security Contributions		227.78		227.78
230 PSERS Retirement Contributions		1,044.50		1,044.50
240 Tuition Reimbursement	20,390.77	26,094.70		46,485.47
250 Unemployment Compensation		22.85		22.85
Total Personnel Services – Employee Benefits	\$20,390.77	\$27,389.83		\$47,780.60
300 <u>Purchased Professional and Technical Services</u>				
322 Professional Educational Services – Ius	231.00			231.00
329 Professional Educational Services – Other	680.00	680.00		1,360.00
360 Employee Training and Development Services	3,644.00			3,644.00
Total Purchased Professional and Technical Services	\$4,555.00	\$680.00		\$5,235.00
600 <u>Supplies</u>				
610 General Supplies	5,070.96	445.02		5,515.98
Total Supplies	\$5,070.96	\$445.02		\$5,515.98
Total 2270 Instructional Staff Professional Development Services	\$30,016.73	\$31,560.93		\$61,577.66

LEA : 112013054 Fairfield Area SD

Printed 1/4/2022 9:34:15 AM

General Fund (10)

2300 Support Services – Administration	Elementary	Secondary	Federal	Total
100 Personnel Services – Salaries				
100 Personnel Services – Salaries	224,287.00	265,342.80		715,638.80
Total Personnel Services – Salaries	\$224,287.00	\$265,342.80		\$715,638.80
200 Personnel Services – Employee Benefits				
210 Group Insurance – Contracted Provider	557.67	608.10		1,638.77
220 Social Security Contributions	16,761.34	19,576.49		53,152.91
230 PSERS Retirement Contributions	76,727.89	89,653.33		236,165.22
260 Workers' Compensation	1,676.16	1,959.86		5,298.36
270 Group Insurance – Self-Insurance	38,010.70	75,352.81		143,510.51
292 Health Savings Accounts	3,949.50	4,826.50		16,674.00
Total Personnel Services – Employee Benefits	\$137,683.26	\$191,977.09		\$456,439.77
300 Purchased Professional and Technical Services				
330 Other Professional Services				117,101.81
340 Technical Services				47,407.40
Total Purchased Professional and Technical Services				\$164,509.21
400 Purchased Property Services				
430 Repairs and Maintenance Services				2,518.00
440 Rentals				1,229.00
Total Purchased Property Services				\$3,747.00
500 Other Purchased Services				
520 Insurance – General				47,724.00
530 Communications	5,272.65	5,211.35		12,584.56
550 Printing and Binding				3,803.88
580 Travel	143.62	991.12		1,134.74
Total Other Purchased Services	\$5,416.27	\$6,202.47		\$65,247.18
600 Supplies				
610 General Supplies	5,999.07	6,241.95	14,040.00	32,458.67
640 Books and Periodicals	478.00			792.00
650 Supplies & Fees – Technology Related	1,660.58	1,660.58		14,563.16
Total Supplies	\$8,137.65	\$7,902.53	\$14,040.00	\$47,813.83
800 Other Objects				
810 Dues and Fees	684.00	1,543.00		211,766.00
820 Claims and Judgments Against the LEA				1,635.00
Total Other Objects	\$684.00	\$1,543.00		\$213,401.00
Total 2300 Support Services – Administration	\$376,208.18	\$472,967.89	\$14,040.00	\$1,666,796.79

LEA : 112013054 Fairfield Area SD

Printed 1/4/2022 9:34:15 AM

General Fund (10)

2310 Board Services

Elementary Secondary Federal Total

300 <u>Purchased Professional and Technical Services</u>				
330 Other Professional Services				82,281.00
Total Purchased Professional and Technical Services				\$82,281.00
500 <u>Other Purchased Services</u>				
520 Insurance – General				47,724.00
Total Other Purchased Services				\$47,724.00
800 <u>Other Objects</u>				
810 Dues and Fees				15,032.00
820 Claims and Judgments Against the LEA				1,635.00
Total Other Objects				\$16,667.00
Total 2310 Board Services				\$146,672.00

LEA : 112013054 Fairfield Area SD

Printed 1/4/2022 9:34:15 AM

General Fund (10)				
2330 Tax Assessment and Collection Services	<u>Elementary</u>	<u>Secondary</u>	<u>Federal</u>	<u>Total</u>
100 <u>Personnel Services – Salaries</u>				
100 Personnel Services – Salaries				19,398.00
Total Personnel Services – Salaries				\$19,398.00
200 <u>Personnel Services – Employee Benefits</u>				
220 Social Security Contributions				1,484.08
260 Workers’ Compensation				138.34
Total Personnel Services – Employee Benefits				\$1,622.42
300 <u>Purchased Professional and Technical Services</u>				
330 Other Professional Services				105.81
340 Technical Services				47,407.40
Total Purchased Professional and Technical Services				\$47,513.21
500 <u>Other Purchased Services</u>				
530 Communications				2,100.56
550 Printing and Binding				3,803.88
Total Other Purchased Services				\$5,904.44
600 <u>Supplies</u>				
610 General Supplies				671.65
650 Supplies & Fees – Technology Related				200.00
Total Supplies				\$871.65
Total 2330 Tax Assessment and Collection Services				\$75,309.72

LEA : 112013054 Fairfield Area SD

Printed 1/4/2022 9:34:15 AM

General Fund (10)

2350 Legal and Accounting Services

<u>Elementary</u>	<u>Secondary</u>	<u>Federal</u>	<u>Total</u>
-------------------	------------------	----------------	--------------

300 Purchased Professional and Technical Services

330 Other Professional Services				34,239.00
---------------------------------	--	--	--	-----------

Total Purchased Professional and Technical Services				\$34,239.00
--	--	--	--	--------------------

Total 2350 Legal and Accounting Services				\$34,239.00
---	--	--	--	--------------------

LEA : 112013054 Fairfield Area SD

Printed 1/4/2022 9:34:15 AM

General Fund (10)				
2360 Office of the Superintendent / Executive Director Services	<u>Elementary</u>	<u>Secondary</u>	<u>Federal</u>	<u>Total</u>
100 <u>Personnel Services – Salaries</u>				
100 Personnel Services – Salaries				206,611.00
Total Personnel Services – Salaries				\$206,611.00
200 <u>Personnel Services – Employee Benefits</u>				
210 Group Insurance – Contracted Provider				473.00
220 Social Security Contributions				15,331.00
230 PSERS Retirement Contributions				69,784.00
260 Workers' Compensation				1,524.00
270 Group Insurance – Self-Insurance				30,147.00
292 Health Savings Accounts				7,898.00
Total Personnel Services – Employee Benefits				\$125,157.00
400 <u>Purchased Property Services</u>				
430 Repairs and Maintenance Services				2,518.00
440 Rentals				1,229.00
Total Purchased Property Services				\$3,747.00
500 <u>Other Purchased Services</u>				
530 Communications	4,472.65	4,361.35		8,834.00
Total Other Purchased Services	\$4,472.65	\$4,361.35		\$8,834.00
600 <u>Supplies</u>				
610 General Supplies			14,040.00	19,546.00
640 Books and Periodicals				314.00
650 Supplies & Fees – Technology Related				1,107.00
Total Supplies			\$14,040.00	\$20,967.00
800 <u>Other Objects</u>				
810 Dues and Fees				2,439.00
Total Other Objects				\$2,439.00
Total 2360 Office of the Superintendent / Executive Director Services	\$4,472.65	\$4,361.35	\$14,040.00	\$367,755.00

LEA : 112013054 Fairfield Area SD

Printed 1/4/2022 9:34:15 AM

General Fund (10)

2370 Community Relations Services	<u>Elementary</u>	<u>Secondary</u>	<u>Federal</u>	<u>Total</u>
600 <u>Supplies</u>				
650 Supplies & Fees – Technology Related				9,935.00
Total Supplies				\$9,935.00
Total 2370 Community Relations Services				\$9,935.00

LEA : 112013054 Fairfield Area SD

Printed 1/4/2022 9:34:15 AM

General Fund (10)				
2380 Office of the Principal Services	<u>Elementary</u>	<u>Secondary</u>	<u>Federal</u>	<u>Total</u>
100 <u>Personnel Services – Salaries</u>				
100 Personnel Services – Salaries	224,287.00	265,342.80		489,629.80
Total Personnel Services – Salaries	\$224,287.00	\$265,342.80		\$489,629.80
200 <u>Personnel Services – Employee Benefits</u>				
210 Group Insurance – Contracted Provider	557.67	608.10		1,165.77
220 Social Security Contributions	16,761.34	19,576.49		36,337.83
230 PSERS Retirement Contributions	76,727.89	89,653.33		166,381.22
260 Workers' Compensation	1,676.16	1,959.86		3,636.02
270 Group Insurance – Self-Insurance	38,010.70	75,352.81		113,363.51
292 Health Savings Accounts	3,949.50	4,826.50		8,776.00
Total Personnel Services – Employee Benefits	\$137,683.26	\$191,977.09		\$329,660.35
500 <u>Other Purchased Services</u>				
530 Communications	800.00	850.00		1,650.00
580 Travel	143.62	991.12		1,134.74
Total Other Purchased Services	\$943.62	\$1,841.12		\$2,784.74
600 <u>Supplies</u>				
610 General Supplies	5,999.07	6,241.95		12,241.02
640 Books and Periodicals	478.00			478.00
650 Supplies & Fees – Technology Related	1,660.58	1,660.58		3,321.16
Total Supplies	\$8,137.65	\$7,902.53		\$16,040.18
800 <u>Other Objects</u>				
810 Dues and Fees	684.00	1,543.00		2,227.00
Total Other Objects	\$684.00	\$1,543.00		\$2,227.00
Total 2380 Office of the Principal Services	\$371,735.53	\$468,606.54		\$840,342.07

LEA : 112013054 Fairfield Area SD

Printed 1/4/2022 9:34:15 AM

General Fund (10)

2390 Other Administration Services	<u>Elementary</u>	<u>Secondary</u>	<u>Federal</u>	<u>Total</u>
300 <u>Purchased Professional and Technical Services</u>				
330 Other Professional Services				476.00
Total Purchased Professional and Technical Services				\$476.00
800 <u>Other Objects</u>				
810 Dues and Fees				192,068.00
Total Other Objects				\$192,068.00
Total 2390 Other Administration Services				\$192,544.00

LEA : 112013054 Fairfield Area SD

Printed 1/4/2022 9:34:15 AM

General Fund (10)				
2400 Support Services – Pupil Health	<u>Elementary</u>	<u>Secondary</u>	<u>Federal</u>	<u>Total</u>
100 <u>Personnel Services – Salaries</u>				
100 Personnel Services – Salaries				71,775.00
Total Personnel Services – Salaries				\$71,775.00
200 <u>Personnel Services – Employee Benefits</u>				
210 Group Insurance – Contracted Provider				72.00
220 Social Security Contributions				5,411.00
230 PSERS Retirement Contributions				23,929.00
260 Workers' Compensation				535.00
270 Group Insurance – Self-Insurance				15,658.00
292 Health Savings Accounts				1,755.00
Total Personnel Services – Employee Benefits				\$47,360.00
300 <u>Purchased Professional and Technical Services</u>				
322 Professional Educational Services – Ius				163,272.00
323 Professional Educational Services – Other Educational Agencies				24,972.00
Total Purchased Professional and Technical Services				\$188,244.00
600 <u>Supplies</u>				
610 General Supplies				1,309.00
Total Supplies				\$1,309.00
800 <u>Other Objects</u>				
810 Dues and Fees				330.00
Total Other Objects				\$330.00
Total 2400 Support Services – Pupil Health				\$309,018.00

LEA : 112013054 Fairfield Area SD

Printed 1/4/2022 9:34:15 AM

General Fund (10)

2420 Medical Services

<u>Elementary</u>	<u>Secondary</u>	<u>Federal</u>	<u>Total</u>
-------------------	------------------	----------------	--------------

300 Purchased Professional and Technical Services

322 Professional Educational Services – Ius			163,272.00
---	--	--	------------

323 Professional Educational Services – Other Educational Agencies			24,972.00
--	--	--	-----------

Total Purchased Professional and Technical Services				\$188,244.00
Total 2420 Medical Services				\$188,244.00

LEA : 112013054 Fairfield Area SD

Printed 1/4/2022 9:34:15 AM

General Fund (10)

2440 Nursing Services

	<u>Elementary</u>	<u>Secondary</u>	<u>Federal</u>	<u>Total</u>
100 <u>Personnel Services – Salaries</u>				
100 Personnel Services – Salaries				71,775.00
Total Personnel Services – Salaries				\$71,775.00
200 <u>Personnel Services – Employee Benefits</u>				
210 Group Insurance – Contracted Provider				72.00
220 Social Security Contributions				5,411.00
230 PSERS Retirement Contributions				23,929.00
260 Workers' Compensation				535.00
270 Group Insurance – Self-Insurance				15,658.00
292 Health Savings Accounts				1,755.00
Total Personnel Services – Employee Benefits				\$47,360.00
600 <u>Supplies</u>				
610 General Supplies				1,309.00
Total Supplies				\$1,309.00
800 <u>Other Objects</u>				
810 Dues and Fees				330.00
Total Other Objects				\$330.00
Total 2440 Nursing Services				\$120,774.00

LEA : 112013054 Fairfield Area SD

Printed 1/4/2022 9:34:15 AM

General Fund (10)					
2500 Support Services – Business		Elementary	Secondary	Federal	Total
100 <u>Personnel Services – Salaries</u>					
100 Personnel Services – Salaries					161,888.00
Total Personnel Services – Salaries					\$161,888.00
200 <u>Personnel Services – Employee Benefits</u>					
210 Group Insurance – Contracted Provider					370.00
220 Social Security Contributions					12,004.00
230 PSERS Retirement Contributions					55,511.00
260 Workers' Compensation					1,214.00
270 Group Insurance – Self-Insurance					43,142.00
292 Health Savings Accounts					6,289.00
Total Personnel Services – Employee Benefits					\$118,530.00
300 <u>Purchased Professional and Technical Services</u>					
330 Other Professional Services					1,350.00
Total Purchased Professional and Technical Services					\$1,350.00
400 <u>Purchased Property Services</u>					
430 Repairs and Maintenance Services					5,770.00
Total Purchased Property Services					\$5,770.00
500 <u>Other Purchased Services</u>					
530 Communications					850.00
580 Travel					1,244.00
Total Other Purchased Services					\$2,094.00
600 <u>Supplies</u>					
610 General Supplies					16,345.00
640 Books and Periodicals					537.00
650 Supplies & Fees – Technology Related					79,212.00
Total Supplies					\$96,094.00
800 <u>Other Objects</u>					
810 Dues and Fees					14,899.00
Total Other Objects					\$14,899.00
Total 2500 Support Services – Business					\$400,625.00

LEA : 112013054 Fairfield Area SD

Printed 1/4/2022 9:34:15 AM

General Fund (10)				
2510 Fiscal Services	<u>Elementary</u>	<u>Secondary</u>	<u>Federal</u>	<u>Total</u>
100 <u>Personnel Services – Salaries</u>				
100 Personnel Services – Salaries				161,888.00
Total Personnel Services – Salaries				\$161,888.00
200 <u>Personnel Services – Employee Benefits</u>				
210 Group Insurance – Contracted Provider				370.00
220 Social Security Contributions				12,004.00
230 PSERS Retirement Contributions				55,511.00
260 Workers' Compensation				1,214.00
270 Group Insurance – Self-Insurance				43,142.00
292 Health Savings Accounts				6,289.00
Total Personnel Services – Employee Benefits				\$118,530.00
300 <u>Purchased Professional and Technical Services</u>				
330 Other Professional Services				1,350.00
Total Purchased Professional and Technical Services				\$1,350.00
400 <u>Purchased Property Services</u>				
430 Repairs and Maintenance Services				5,770.00
Total Purchased Property Services				\$5,770.00
500 <u>Other Purchased Services</u>				
530 Communications				850.00
580 Travel				1,244.00
Total Other Purchased Services				\$2,094.00
600 <u>Supplies</u>				
610 General Supplies				16,345.00
640 Books and Periodicals				537.00
650 Supplies & Fees – Technology Related				79,212.00
Total Supplies				\$96,094.00
800 <u>Other Objects</u>				
810 Dues and Fees				14,899.00
Total Other Objects				\$14,899.00
Total 2510 Fiscal Services				\$400,625.00

LEA : 112013054 Fairfield Area SD

Printed 1/4/2022 9:34:15 AM

General Fund (10)				
2511 Supervision of Fiscal Services - Head of Component	<u>Elementary</u>	<u>Secondary</u>	<u>Federal</u>	<u>Total</u>
100 <u>Personnel Services – Salaries</u>				
100 Personnel Services – Salaries				161,888.00
Total Personnel Services – Salaries				\$161,888.00
200 <u>Personnel Services – Employee Benefits</u>				
210 Group Insurance – Contracted Provider				370.00
220 Social Security Contributions				12,004.00
230 PSERS Retirement Contributions				55,511.00
260 Workers' Compensation				1,214.00
270 Group Insurance – Self-Insurance				43,142.00
292 Health Savings Accounts				6,289.00
Total Personnel Services – Employee Benefits				\$118,530.00
300 <u>Purchased Professional and Technical Services</u>				
330 Other Professional Services				1,350.00
Total Purchased Professional and Technical Services				\$1,350.00
400 <u>Purchased Property Services</u>				
430 Repairs and Maintenance Services				5,770.00
Total Purchased Property Services				\$5,770.00
500 <u>Other Purchased Services</u>				
530 Communications				850.00
580 Travel				1,244.00
Total Other Purchased Services				\$2,094.00
600 <u>Supplies</u>				
610 General Supplies				16,345.00
640 Books and Periodicals				537.00
650 Supplies & Fees – Technology Related				79,212.00
Total Supplies				\$96,094.00
800 <u>Other Objects</u>				
810 Dues and Fees				14,899.00
Total Other Objects				\$14,899.00
Total 2511 Supervision of Fiscal Services - Head of Component				\$400,625.00

LEA : 112013054 Fairfield Area SD

Printed 1/4/2022 9:34:15 AM

General Fund (10)				
2600 Operation and Maintenance of Plant Services	<u>Elementary</u>	<u>Secondary</u>	<u>Federal</u>	<u>Total</u>
100 <u>Personnel Services – Salaries</u>				
100 Personnel Services – Salaries				354,821.90
Total Personnel Services – Salaries				\$354,821.90
200 <u>Personnel Services – Employee Benefits</u>				
210 Group Insurance – Contracted Provider				492.33
220 Social Security Contributions				26,387.06
230 PSERS Retirement Contributions				183,649.83
260 Workers' Compensation				2,550.60
270 Group Insurance – Self-Insurance				88,777.34
292 Health Savings Accounts				10,460.00
Total Personnel Services – Employee Benefits				\$312,317.16
300 <u>Purchased Professional and Technical Services</u>				
330 Other Professional Services				31,469.00
350 Security / Safety Services				38,367.00
Total Purchased Professional and Technical Services				\$69,836.00
400 <u>Purchased Property Services</u>				
410 Cleaning Services				10,734.00
420 Utility Services				28,156.28
430 Repairs and Maintenance Services				113,939.00
440 Rentals				1,412.00
Total Purchased Property Services				\$154,241.28
500 <u>Other Purchased Services</u>				
522 Automotive Liability Insurance				3,062.00
530 Communications				550.00
580 Travel				112.00
Total Other Purchased Services				\$3,724.00
600 <u>Supplies</u>				
610 General Supplies	49,718.41	48,478.46	11,436.00	109,632.87
620 Energy				229,620.00
650 Supplies & Fees – Technology Related				12,556.00
Total Supplies	\$49,718.41	\$48,478.46	\$11,436.00	\$351,808.87
700 <u>Property</u>				
752 Capital Equipment – Original and Additional				38,100.00
Total Property				\$38,100.00
800 <u>Other Objects</u>				
810 Dues and Fees				1,936.00
Total Other Objects				\$1,936.00
Total 2600 Operation and Maintenance of Plant Services	\$49,718.41	\$48,478.46	\$11,436.00	\$1,286,785.21

LEA : 112013054 Fairfield Area SD

Printed 1/4/2022 9:34:15 AM

General Fund (10)

2610 Supervision of Operation and Maintenance of Plant Services	<u>Elementary</u>	<u>Secondary</u>	<u>Federal</u>	<u>Total</u>
100 <u>Personnel Services – Salaries</u>				
100 Personnel Services – Salaries				354,821.90
Total Personnel Services – Salaries				\$354,821.90
200 <u>Personnel Services – Employee Benefits</u>				
210 Group Insurance – Contracted Provider				492.33
220 Social Security Contributions				26,387.06
230 PSERS Retirement Contributions				183,649.83
260 Workers' Compensation				2,550.60
270 Group Insurance – Self-Insurance				88,777.34
292 Health Savings Accounts				10,460.00
Total Personnel Services – Employee Benefits				\$312,317.16
600 <u>Supplies</u>				
610 General Supplies	7,375.72	7,192.15		14,567.87
Total Supplies	\$7,375.72	\$7,192.15		\$14,567.87
Total 2610 Supervision of Operation and Maintenance of Plant Services	\$7,375.72	\$7,192.15		\$681,706.93

LEA : 112013054 Fairfield Area SD

Printed 1/4/2022 9:34:15 AM

General Fund (10)

2611 Supervision of Operation and Maintenance of Plant Services – Head of Component	<u>Elementary</u>	<u>Secondary</u>	<u>Federal</u>	<u>Total</u>
100 <u>Personnel Services – Salaries</u>				
100 Personnel Services – Salaries				354,821.90
Total Personnel Services – Salaries				\$354,821.90
200 <u>Personnel Services – Employee Benefits</u>				
210 Group Insurance – Contracted Provider				492.33
220 Social Security Contributions				26,387.06
230 PSERS Retirement Contributions				183,649.83
260 Workers' Compensation				2,550.60
270 Group Insurance – Self-Insurance				88,777.34
292 Health Savings Accounts				10,460.00
Total Personnel Services – Employee Benefits				\$312,317.16
600 <u>Supplies</u>				
610 General Supplies	7,375.72	7,192.15		14,567.87
Total Supplies	\$7,375.72	\$7,192.15		\$14,567.87
Total 2611 Supervision of Operation and Maintenance of Plant Services – Head of Component	\$7,375.72	\$7,192.15		\$681,706.93

LEA : 112013054 Fairfield Area SD

Printed 1/4/2022 9:34:15 AM

General Fund (10)				
2620 Operation of Buildings Services	<u>Elementary</u>	<u>Secondary</u>	<u>Federal</u>	<u>Total</u>
300 <u>Purchased Professional and Technical Services</u>				
330 Other Professional Services				29,766.00
Total Purchased Professional and Technical Services				\$29,766.00
400 <u>Purchased Property Services</u>				
410 Cleaning Services				10,734.00
420 Utility Services				28,156.28
430 Repairs and Maintenance Services				106,704.00
440 Rentals				1,412.00
Total Purchased Property Services				\$147,006.28
500 <u>Other Purchased Services</u>				
530 Communications				550.00
580 Travel				112.00
Total Other Purchased Services				\$662.00
600 <u>Supplies</u>				
610 General Supplies	29,141.01	28,413.99	11,436.00	68,991.00
620 Energy				227,343.00
650 Supplies & Fees – Technology Related				6,879.00
Total Supplies	\$29,141.01	\$28,413.99	\$11,436.00	\$303,213.00
700 <u>Property</u>				
752 Capital Equipment – Original and Additional				38,100.00
Total Property				\$38,100.00
800 <u>Other Objects</u>				
810 Dues and Fees				1,511.00
Total Other Objects				\$1,511.00
Total 2620 Operation of Buildings Services	\$29,141.01	\$28,413.99	\$11,436.00	\$520,258.28

LEA : 112013054 Fairfield Area SD

Printed 1/4/2022 9:34:15 AM

General Fund (10)				
2630 Care and Upkeep of Grounds Services	<u>Elementary</u>	<u>Secondary</u>	<u>Federal</u>	<u>Total</u>
300 <u>Purchased Professional and Technical Services</u>				
330 Other Professional Services				191.00
Total Purchased Professional and Technical Services				\$191.00
400 <u>Purchased Property Services</u>				
430 Repairs and Maintenance Services				7,235.00
Total Purchased Property Services				\$7,235.00
600 <u>Supplies</u>				
610 General Supplies	12,578.91	12,265.09		24,844.00
Total Supplies	\$12,578.91	\$12,265.09		\$24,844.00
800 <u>Other Objects</u>				
810 Dues and Fees				425.00
Total Other Objects				\$425.00
Total 2630 Care and Upkeep of Grounds Services	\$12,578.91	\$12,265.09		\$32,695.00

LEA : 112013054 Fairfield Area SD

Printed 1/4/2022 9:34:15 AM

General Fund (10)

2640 Care and Upkeep of Equipment Services

	<u>Elementary</u>	<u>Secondary</u>	<u>Federal</u>	<u>Total</u>
600 <u>Supplies</u>				
610 General Supplies	12.66	12.34		25.00
620 Energy				148.00
Total Supplies	\$12.66	\$12.34		\$173.00
Total 2640 Care and Upkeep of Equipment Services	\$12.66	\$12.34		\$173.00

LEA : 112013054 Fairfield Area SD

Printed 1/4/2022 9:34:15 AM

General Fund (10)

2650 Vehicle Operation and Maintenance Services (Other Than Student Transportation Vehicles)	<u>Elementary</u>	<u>Secondary</u>	<u>Federal</u>	<u>Total</u>
500 <u>Other Purchased Services</u>				
522 Automotive Liability Insurance				3,062.00
Total Other Purchased Services				\$3,062.00
600 <u>Supplies</u>				
610 General Supplies	610.11	594.89		1,205.00
620 Energy				2,129.00
Total Supplies	\$610.11	\$594.89		\$3,334.00
Total 2650 Vehicle Operation and Maintenance Services (Other Than Student Transportation Vehicles)	\$610.11	\$594.89		\$6,396.00

LEA : 112013054 Fairfield Area SD

Printed 1/4/2022 9:34:15 AM

General Fund (10)				
2660 Safety and Security Services	<u>Elementary</u>	<u>Secondary</u>	<u>Federal</u>	<u>Total</u>
300 <u>Purchased Professional and Technical Services</u>				
330 Other Professional Services				1,512.00
350 Security / Safety Services				38,367.00
Total Purchased Professional and Technical Services				\$39,879.00
600 <u>Supplies</u>				
650 Supplies & Fees – Technology Related				5,677.00
Total Supplies				\$5,677.00
Total 2660 Safety and Security Services				\$45,556.00

LEA : 112013054 Fairfield Area SD

Printed 1/4/2022 9:34:15 AM

General Fund (10)				
2700 Student Transportation Services	<u>Elementary</u>	<u>Secondary</u>	<u>Federal</u>	<u>Total</u>
100 <u>Personnel Services – Salaries</u>				
100 Personnel Services – Salaries				9,091.00
Total Personnel Services – Salaries				\$9,091.00
200 <u>Personnel Services – Employee Benefits</u>				
210 Group Insurance – Contracted Provider				14.00
220 Social Security Contributions				669.00
230 PSERS Retirement Contributions				3,117.00
260 Workers' Compensation				68.00
270 Group Insurance – Self-Insurance				5,304.00
Total Personnel Services – Employee Benefits				\$9,172.00
400 <u>Purchased Property Services</u>				
430 Repairs and Maintenance Services				584.00
Total Purchased Property Services				\$584.00
500 <u>Other Purchased Services</u>				
513 Contracted Carriers				796,455.00
516 Student Transportation Services From the IU				23,827.00
Total Other Purchased Services				\$820,282.00
600 <u>Supplies</u>				
610 General Supplies				427.00
650 Supplies & Fees – Technology Related				3,350.00
Total Supplies				\$3,777.00
Total 2700 Student Transportation Services				\$842,906.00

LEA : 112013054 Fairfield Area SD

Printed 1/4/2022 9:34:15 AM

General Fund (10)

2710 Supervision of Student Transportation Services

Elementary Secondary Federal Total

100 <u>Personnel Services – Salaries</u>				
100 Personnel Services – Salaries				9,091.00
Total Personnel Services – Salaries				\$9,091.00
200 <u>Personnel Services – Employee Benefits</u>				
210 Group Insurance – Contracted Provider				14.00
220 Social Security Contributions				669.00
230 PSERS Retirement Contributions				3,117.00
260 Workers' Compensation				68.00
270 Group Insurance – Self-Insurance				5,304.00
Total Personnel Services – Employee Benefits				\$9,172.00
400 <u>Purchased Property Services</u>				
430 Repairs and Maintenance Services				584.00
Total Purchased Property Services				\$584.00
500 <u>Other Purchased Services</u>				
513 Contracted Carriers				3,012.00
Total Other Purchased Services				\$3,012.00
600 <u>Supplies</u>				
610 General Supplies				427.00
650 Supplies & Fees – Technology Related				3,350.00
Total Supplies				\$3,777.00
Total 2710 Supervision of Student Transportation Services				\$25,636.00

LEA : 112013054 Fairfield Area SD

Printed 1/4/2022 9:34:15 AM

General Fund (10)				
2711 Supervision of Student Transportation Services – Head of Component	<u>Elementary</u>	<u>Secondary</u>	<u>Federal</u>	<u>Total</u>
100 <u>Personnel Services – Salaries</u>				
100 Personnel Services – Salaries				9,091.00
Total Personnel Services – Salaries				\$9,091.00
200 <u>Personnel Services – Employee Benefits</u>				
210 Group Insurance – Contracted Provider				14.00
220 Social Security Contributions				669.00
230 PSERS Retirement Contributions				3,117.00
260 Workers' Compensation				68.00
270 Group Insurance – Self-Insurance				5,304.00
Total Personnel Services – Employee Benefits				\$9,172.00
400 <u>Purchased Property Services</u>				
430 Repairs and Maintenance Services				584.00
Total Purchased Property Services				\$584.00
500 <u>Other Purchased Services</u>				
513 Contracted Carriers				3,012.00
Total Other Purchased Services				\$3,012.00
600 <u>Supplies</u>				
610 General Supplies				427.00
650 Supplies & Fees – Technology Related				3,350.00
Total Supplies				\$3,777.00
Total 2711 Supervision of Student Transportation Services – Head of Component				\$25,636.00

LEA : 112013054 Fairfield Area SD

Printed 1/4/2022 9:34:15 AM

General Fund (10)

2720 Vehicle Operation Services

Elementary Secondary Federal Total

500 Other Purchased Services

513 Contracted Carriers 775,517.00

516 Student Transportation Services From the IU 23,827.00

Total Other Purchased Services				\$799,344.00
Total 2720 Vehicle Operation Services				\$799,344.00

LEA : 112013054 Fairfield Area SD

Printed 1/4/2022 9:34:15 AM

General Fund (10)

2750 Nonpublic Transportation	<u>Elementary</u>	<u>Secondary</u>	<u>Federal</u>	<u>Total</u>
500 <u>Other Purchased Services</u>				
513 Contracted Carriers				17,926.00
Total Other Purchased Services				\$17,926.00
Total 2750 Nonpublic Transportation				\$17,926.00

LEA : 112013054 Fairfield Area SD

Printed 1/4/2022 9:34:15 AM

General Fund (10)				
2800 Support Services – Central	<u>Elementary</u>	<u>Secondary</u>	<u>Federal</u>	<u>Total</u>
100 <u>Personnel Services – Salaries</u>				
100 Personnel Services – Salaries				95,408.82
Total Personnel Services – Salaries				\$95,408.82
200 <u>Personnel Services – Employee Benefits</u>				
210 Group Insurance – Contracted Provider				143.11
220 Social Security Contributions				7,100.94
230 PSERS Retirement Contributions				32,715.79
260 Workers' Compensation				715.52
270 Group Insurance – Self-Insurance				24,876.25
292 Health Savings Accounts				1,755.00
Total Personnel Services – Employee Benefits				\$67,306.61
300 <u>Purchased Professional and Technical Services</u>				
330 Other Professional Services				9,180.00
340 Technical Services				2,975.00
Total Purchased Professional and Technical Services				\$12,155.00
600 <u>Supplies</u>				
610 General Supplies				27,122.00
650 Supplies & Fees – Technology Related				79,290.78
Total Supplies				\$106,412.78
800 <u>Other Objects</u>				
810 Dues and Fees				389.97
Total Other Objects				\$389.97
Total 2800 Support Services – Central				\$281,673.18

LEA : 112013054 Fairfield Area SD

Printed 1/4/2022 9:34:15 AM

General Fund (10)				
2810 Planning, Research, Development and Evaluation Services	<u>Elementary</u>	<u>Secondary</u>	<u>Federal</u>	<u>Total</u>
100 <u>Personnel Services – Salaries</u>				
100 Personnel Services – Salaries				95,408.82
Total Personnel Services – Salaries				\$95,408.82
200 <u>Personnel Services – Employee Benefits</u>				
210 Group Insurance – Contracted Provider				143.11
220 Social Security Contributions				7,100.94
230 PSERS Retirement Contributions				32,715.79
260 Workers' Compensation				715.52
270 Group Insurance – Self-Insurance				24,876.25
292 Health Savings Accounts				1,755.00
Total Personnel Services – Employee Benefits				\$67,306.61
300 <u>Purchased Professional and Technical Services</u>				
330 Other Professional Services				9,180.00
340 Technical Services				2,975.00
Total Purchased Professional and Technical Services				\$12,155.00
600 <u>Supplies</u>				
610 General Supplies				27,122.00
650 Supplies & Fees – Technology Related				79,290.78
Total Supplies				\$106,412.78
800 <u>Other Objects</u>				
810 Dues and Fees				89.97
Total Other Objects				\$89.97
Total 2810 Planning, Research, Development and Evaluation Services				\$281,373.18

LEA : 112013054 Fairfield Area SD

Printed 1/4/2022 9:34:15 AM

General Fund (10)				
2830 Staff Services	<u>Elementary</u>	<u>Secondary</u>	<u>Federal</u>	<u>Total</u>
800 <u>Other Objects</u>				
810 Dues and Fees				300.00
Total Other Objects				\$300.00
Total 2830 Staff Services				\$300.00

LEA : 112013054 Fairfield Area SD

Printed 1/4/2022 9:34:15 AM

General Fund (10)				
2832 Recruitment and Placement Services	<u>Elementary</u>	<u>Secondary</u>	<u>Federal</u>	<u>Total</u>
800 <u>Other Objects</u>				
810 Dues and Fees				300.00
Total Other Objects				\$300.00
Total 2832 Recruitment and Placement Services				\$300.00

LEA : 112013054 Fairfield Area SD

Printed 1/4/2022 9:34:15 AM

General Fund (10)

2900 Other Support Services

Elementary Secondary Federal Total

500 Other Purchased Services

595 IU Payments By Withholding 8,133.20 8,133.20

596 Direct Payments To Intermediate Units 1.00

Total Other Purchased Services				\$8,133.20	\$8,134.20
Total 2900 Other Support Services				\$8,133.20	\$8,134.20

LEA : 112013054 Fairfield Area SD

Printed 1/4/2022 9:34:15 AM

General Fund (10)				
2910 Support Services Not Listed Elsewhere In the 2000 Series	<u>Elementary</u>	<u>Secondary</u>	<u>Federal</u>	<u>Total</u>
500 <u>Other Purchased Services</u>				
595 IU Payments By Withholding			8,133.20	8,133.20
596 Direct Payments To Intermediate Units				1.00
Total Other Purchased Services			\$8,133.20	\$8,134.20
Total 2910 Support Services Not Listed Elsewhere In the 2000 Series			\$8,133.20	\$8,134.20

LEA : 112013054 Fairfield Area SD

Printed 1/4/2022 9:34:21 AM

General Fund (10)	
3000 Operation of Non-Instructional Services	<u>Total</u>
100 <u>Personnel Services – Salaries</u>	
100 Personnel Services – Salaries	217,607.44
Total Personnel Services – Salaries	\$217,607.44
200 <u>Personnel Services – Employee Benefits</u>	
220 Social Security Contributions	16,470.26
230 PSERS Retirement Contributions	65,259.93
250 Unemployment Compensation	1,105.54
260 Workers' Compensation	1,607.08
270 Group Insurance – Self-Insurance	3,661.75
292 Health Savings Accounts	878.00
Total Personnel Services – Employee Benefits	\$88,982.56
300 <u>Purchased Professional and Technical Services</u>	
330 Other Professional Services	51,913.01
350 Security / Safety Services	2,187.30
Total Purchased Professional and Technical Services	\$54,100.31
400 <u>Purchased Property Services</u>	
430 Repairs and Maintenance Services	6,878.29
440 Rentals	4,596.80
Total Purchased Property Services	\$11,475.09
500 <u>Other Purchased Services</u>	
510 Student Transportation Services	35,032.61
520 Insurance – General	7,400.00
530 Communications	400.00
580 Travel	6,336.60
Total Other Purchased Services	\$49,169.21
600 <u>Supplies</u>	
610 General Supplies	59,811.20
640 Books and Periodicals	435.00
650 Supplies & Fees – Technology Related	3,347.87
Total Supplies	\$63,594.07
700 <u>Property</u>	
762 Capitalized Equipment - Replacement	8,236.00
Total Property	\$8,236.00
800 <u>Other Objects</u>	
810 Dues and Fees	9,688.32
Total Other Objects	\$9,688.32
Total 3000 Operation of Non-Instructional Services	\$502,853.00

LEA : 112013054 Fairfield Area SD

Printed 1/4/2022 9:34:21 AM

General Fund (10)				
3200 Student Activities	<u>Elementary</u>	<u>Secondary</u>	<u>Federal</u>	<u>Total</u>
100 <u>Personnel Services – Salaries</u>				
100 Personnel Services – Salaries				217,607.44
Total Personnel Services – Salaries				\$217,607.44
200 <u>Personnel Services – Employee Benefits</u>				
220 Social Security Contributions				16,470.26
230 PSERS Retirement Contributions				65,259.93
250 Unemployment Compensation				1,105.54
260 Workers' Compensation				1,607.08
270 Group Insurance – Self-Insurance				3,661.75
292 Health Savings Accounts				878.00
Total Personnel Services – Employee Benefits				\$88,982.56
300 <u>Purchased Professional and Technical Services</u>				
330 Other Professional Services				51,913.01
350 Security / Safety Services				2,187.30
Total Purchased Professional and Technical Services				\$54,100.31
400 <u>Purchased Property Services</u>				
430 Repairs and Maintenance Services				6,878.29
440 Rentals				4,596.80
Total Purchased Property Services				\$11,475.09
500 <u>Other Purchased Services</u>				
510 Student Transportation Services				35,032.61
520 Insurance – General				7,400.00
530 Communications				400.00
580 Travel				6,336.60
Total Other Purchased Services				\$49,169.21
600 <u>Supplies</u>				
610 General Supplies				59,811.20
640 Books and Periodicals				435.00
650 Supplies & Fees – Technology Related				3,347.87
Total Supplies				\$63,594.07
700 <u>Property</u>				
762 Capitalized Equipment - Replacement				8,236.00
Total Property				\$8,236.00
800 <u>Other Objects</u>				
810 Dues and Fees				9,688.32
Total Other Objects				\$9,688.32
Total 3200 Student Activities				\$502,853.00

LEA : 112013054 Fairfield Area SD

Printed 1/4/2022 9:34:34 AM

General Fund (10)	
5000 Other Expenditures and Financing Uses	<u>Total</u>
800 <u>Other Objects</u>	
830 Interest	810,894.00
Total Other Objects	\$810,894.00
900 <u>Other Uses of Funds</u>	
910 Redemption of Principal	13,398,207.00
939 Other Fund Transfers	563,571.00
Total Other Uses of Funds	\$13,961,778.00
Total 5000 Other Expenditures and Financing Uses	\$14,772,672.00

LEA : 112013054 Fairfield Area SD

Printed 1/4/2022 9:34:34 AM

General Fund (10)

5100 Debt Service / Other Expenditures and Financing Uses	<u>Elementary</u>	<u>Secondary</u>	<u>Federal</u>	<u>Total</u>
800 <u>Other Objects</u>				
830 Interest				810,894.00
Total Other Objects				\$810,894.00
900 <u>Other Uses of Funds</u>				
910 Redemption of Principal				13,398,207.00
Total Other Uses of Funds				\$13,398,207.00
Total 5100 Debt Service / Other Expenditures and Financing Uses				\$14,209,101.00

LEA : 112013054 Fairfield Area SD

Printed 1/4/2022 9:34:34 AM

General Fund (10)				
5110 Debt Service	<u>Elementary</u>	<u>Secondary</u>	<u>Federal</u>	<u>Total</u>
800 <u>Other Objects</u>				
830 Interest				810,894.00
Total Other Objects				\$810,894.00
900 <u>Other Uses of Funds</u>				
910 Redemption of Principal				905,979.00
Total Other Uses of Funds				\$905,979.00
Total 5110 Debt Service				\$1,716,873.00

LEA : 112013054 Fairfield Area SD

Printed 1/4/2022 9:34:34 AM

General Fund (10)

5120 Debt Service – Refunded Bonds	<u>Elementary</u>	<u>Secondary</u>	<u>Federal</u>	<u>Total</u>
900 <u>Other Uses of Funds</u>				
910 Redemption of Principal				12,492,228.00
Total Other Uses of Funds				\$12,492,228.00
Total 5120 Debt Service – Refunded Bonds				\$12,492,228.00

LEA : 112013054 Fairfield Area SD

Printed 1/4/2022 9:34:34 AM

General Fund (10)

5200 Interfund Transfers – Out	<u>Elementary</u>	<u>Secondary</u>	<u>Federal</u>	<u>Total</u>
900 <u>Other Uses of Funds</u>				
939 Other Fund Transfers				563,571.00
Total Other Uses of Funds				\$563,571.00
Total 5200 Interfund Transfers – Out				\$563,571.00

LEA : 112013054 Fairfield Area SD

Printed 1/4/2022 9:34:34 AM

General Fund (10)

5230 Capital Projects Fund Transfers	<u>Elementary</u>	<u>Secondary</u>	<u>Federal</u>	<u>Total</u>
900 <u>Other Uses of Funds</u>				
939 Other Fund Transfers				503,571.00
Total Other Uses of Funds				\$503,571.00
Total 5230 Capital Projects Fund Transfers				\$503,571.00

LEA : 112013054 Fairfield Area SD

Printed 1/4/2022 9:34:34 AM

General Fund (10)

5250 Enterprise Fund Transfers	<u>Elementary</u>	<u>Secondary</u>	<u>Federal</u>	<u>Total</u>
900 <u>Other Uses of Funds</u>				
939 Other Fund Transfers				60,000.00
Total Other Uses of Funds				\$60,000.00
Total 5250 Enterprise Fund Transfers				\$60,000.00

LEA : 112013054 Fairfield Area SD

Printed 1/4/2022 9:34:27 AM

Capital Reserve Fund - § 1431 (32)

4000 Facilities Acquisition, Construction and Improvement Services

Total

700 <u>Property</u>	
762 Capitalized Equipment - Replacement	117,361.00
Total Property	\$117,361.00
Total 4000 Facilities Acquisition, Construction and Improvement Services	\$117,361.00

LEA : 112013054 Fairfield Area SD

Printed 1/4/2022 9:34:27 AM

Capital Reserve Fund - § 1431 (32)

4600 Existing Building Improvement Services	<u>Elementary</u>	<u>Secondary</u>	<u>Federal</u>	<u>Total</u>
700 <u>Property</u>				
762 Capitalized Equipment - Replacement				117,361.00
Total Property				\$117,361.00
Total 4600 Existing Building Improvement Services				\$117,361.00

LEA : 112013054 Fairfield Area SD

Printed 1/4/2022 9:34:30 AM

Other Capital Projects Fund (39)

4000 Facilities Acquisition, Construction and Improvement Services

Total

700 <u>Property</u>	
762 Capitalized Equipment - Replacement	5,572,846.00
Total Property	\$5,572,846.00
Total 4000 Facilities Acquisition, Construction and Improvement Services	\$5,572,846.00

LEA : 112013054 Fairfield Area SD

Printed 1/4/2022 9:34:30 AM

Other Capital Projects Fund (39)

4600 Existing Building Improvement Services	<u>Elementary</u>	<u>Secondary</u>	<u>Federal</u>	<u>Total</u>
700 <u>Property</u>				
762 Capitalized Equipment - Replacement				5,572,846.00
Total Property				\$5,572,846.00
Total 4600 Existing Building Improvement Services				\$5,572,846.00

LEA : 112013054 Fairfield Area SD

Printed 1/4/2022 9:34:57 AM

	<u>General Fund(10)</u>	<u>Student Sponsored Activity Fund(21)</u>	<u>Public Purpose Trust(27)</u>	<u>Other Compt Approved (28)</u>	<u>Athletic / Activity(29)</u>
1000 Instruction					
1100 Regular Programs - Elementary / Secondary	6,556,462.14				
1200 Special Programs - Elementary / Secondary	2,251,658.51				
1300 Vocational Education	877,079.14				
1400 Other Instructional Programs - Elementary / Secondary	85,871.60				
Total Instruction	\$9,771,071.39				
2000 Support Services					
2100 Support Services - Students	571,581.54				
2200 Support Services - Instructional Staff	242,751.05				
2300 Support Services - Administration	1,666,796.79				
2400 Support Services - Pupil Health	309,018.00				
2500 Support Services - Business	400,625.00				
2600 Operation and Maintenance of Plant Services	1,286,785.21				
2700 Student Transportation Services	842,906.00				
2800 Support Services - Central	281,673.18				
2900 Other Support Services	8,134.20				
Total Support Services	\$5,610,270.97				
3000 Operation of Non-Instructional Services					
3200 Student Activities	502,853.00				
Total Operation of Non-Instructional Services	\$502,853.00				
4000 Facilities Acquisition, Construction and Improvement Services					
4600 Existing Building Improvement Services					
Total Facilities Acquisition, Construction and Improvement Services					
5000 Other Expenditures and Financing Uses					
5100 Debt Service / Other Expenditures and Financing Uses	14,209,101.00				
5200 Interfund Transfers - Out	563,571.00				
Total Other Expenditures and Financing Uses	\$14,772,672.00				
TOTAL ACTUAL EXPENDITURES & OTHER FINANCING USES	\$30,656,867.36				

LEA : 112013054 Fairfield Area SD

Printed 1/4/2022 9:34:57 AM

	<u>Capital Reserve (690.1850)(31)</u>	<u>Capital Reserve (1431)(32)</u>	<u>Other Capital Projects Fund(39)</u>	<u>Debt Service(40)</u>	<u>Permanent(90)</u>
1000 Instruction					
1100 Regular Programs - Elementary / Secondary					
1200 Special Programs - Elementary / Secondary					
1300 Vocational Education					
1400 Other Instructional Programs - Elementary / Secondary					
Total Instruction					
2000 Support Services					
2100 Support Services - Students					
2200 Support Services - Instructional Staff					
2300 Support Services - Administration					
2400 Support Services - Pupil Health					
2500 Support Services - Business					
2600 Operation and Maintenance of Plant Services					
2700 Student Transportation Services					
2800 Support Services - Central					
2900 Other Support Services					
Total Support Services					
3000 Operation of Non-Instructional Services					
3200 Student Activities					
Total Operation of Non-Instructional Services					
4000 Facilities Acquisition, Construction and Improvement Services					
4600 Existing Building Improvement Services		117,361.00	5,572,846.00		
Total Facilities Acquisition, Construction and Improvement Services		\$117,361.00	\$5,572,846.00		
5000 Other Expenditures and Financing Uses					
5100 Debt Service / Other Expenditures and Financing Uses					
5200 Interfund Transfers - Out					
Total Other Expenditures and Financing Uses					
TOTAL ACTUAL EXPENDITURES & OTHER FINANCING USES		\$117,361.00	\$5,572,846.00		

	<u>Total</u>
1000 <u>Instruction</u>	
1100 Regular Programs - Elementary / Secondary	6,556,462.14
1200 Special Programs - Elementary / Secondary	2,251,658.51
1300 Vocational Education	877,079.14
1400 Other Instructional Programs - Elementary / Secondary	85,871.60
Total Instruction	\$9,771,071.39
2000 <u>Support Services</u>	
2100 Support Services - Students	571,581.54
2200 Support Services - Instructional Staff	242,751.05
2300 Support Services - Administration	1,666,796.79
2400 Support Services - Pupil Health	309,018.00
2500 Support Services - Business	400,625.00
2600 Operation and Maintenance of Plant Services	1,286,785.21
2700 Student Transportation Services	842,906.00
2800 Support Services - Central	281,673.18
2900 Other Support Services	8,134.20
Total Support Services	\$5,610,270.97
3000 <u>Operation of Non-Instructional Services</u>	
3200 Student Activities	502,853.00
Total Operation of Non-Instructional Services	\$502,853.00
4000 <u>Facilities Acquisition, Construction and Improvement Services</u>	
4600 Existing Building Improvement Services	5,690,207.00
Total Facilities Acquisition, Construction and Improvement Services	\$5,690,207.00
5000 <u>Other Expenditures and Financing Uses</u>	
5100 Debt Service / Other Expenditures and Financing Uses	14,209,101.00
5200 Interfund Transfers - Out	563,571.00
Total Other Expenditures and Financing Uses	\$14,772,672.00
TOTAL ACTUAL EXPENDITURES & OTHER FINANCING USES	\$36,347,074.36

LEA : 112013054 Fairfield Area SD

Printed 1/4/2022 9:35:09 AM

PSERS Salary Data (Salary Data should relate to the General Fund only)

Amount	Description	Amount
	Total Salary Base for salaries subject to PSERS withholding	6,616,178.91
	Total Federally Funded salaries subject to PSERS withholding	116,737.00

Title I Expenditure Data

Amount	Description	Amount
	Expenditures Funded with Current Title I Funds	95,237.00
	Expenditures Funded with Carry over Title I Funds	
Total Title I Expenditure Data		\$95,237.00

Benefits for Staff Relative to Collective
Bargaining Agreements

	OBJECT	COVERED	NOT COVERED	TOTAL
10 General Fund				
	211 Medical Insurance			
	212 Dental Insurance			
	215 Eye Care Insurance			
	216 Prescription Insurance			
	271 Self-Insurance Medical Benefits	678,507.67	324,929.34	1,003,437.01
	272 Self-Insurance Dental Benefits			
	275 Self-Insurance Eye Care Benefits			
	276 Self-Insurance Prescription Benefits			
	FUND TOTAL	\$678,507.67	\$324,929.34	\$1,003,437.01
50 Enterprise Fund				
	211 Medical Insurance			
	212 Dental Insurance			
	215 Eye Care Insurance			
	216 Prescription Insurance			
	271 Self-Insurance Medical Benefits		20,607.68	20,607.68
	272 Self-Insurance Dental Benefits			
	275 Self-Insurance Eye Care Benefits			
	276 Self-Insurance Prescription Benefits			
	FUND TOTAL		\$20,607.68	\$20,607.68
60 Internal Service Fund	No Self Insurance data to report			
	211 Medical Insurance			
	212 Dental Insurance			
	215 Eye Care Insurance			
	216 Prescription Insurance			
	271 Self-Insurance Medical Benefits			
	272 Self-Insurance Dental Benefits			
	275 Self-Insurance Eye Care Benefits			
	276 Self-Insurance Prescription Benefits			
	FUND TOTAL			
Total of All Funds		\$678,507.67	\$345,537.02	\$1,024,044.69

LEA : 112013054 Fairfield Area SD

Printed 1/4/2022 9:35:17 AM

Function	Special Education (Prior Year)	Nonspecial Education (Prior Year)	Total (Prior Year)	Special Education (Current Year)	Nonspecial Education (Current Year)	Total (Current Year)
2120 Guidance Services	50,851.21	340,311.96	391,163.17	56,291.36	304,550.66	360,842.02
2140 Psychological Services	97,319.24	24,329.82	121,649.06	20,076.08	108,616.74	128,692.82
2150 Speech Pathology and Audiology Services						
2160 Social Work Services						
2260 Instruction and Curriculum Development Services		1,272.89	1,272.89	922.00	4,993.00	5,915.00
2350 Legal and Accounting Services	12,803.79	24,854.41	37,658.20	5,341.00	28,898.00	34,239.00
2420 Medical Services	48,208.62	34,909.70	83,118.32	29,366.06	158,877.94	188,244.00
2440 Nursing Services	12,941.04	90,587.29	103,528.33	18,840.51	101,932.02	120,772.53
2700 Student Transportation Services	372,548.28	544,024.86	916,573.14	392,204.00	450,702.00	842,906.00
Total	\$594,672.18	\$1,060,290.93	\$1,654,963.11	\$523,041.01	\$1,158,570.36	\$1,681,611.37

LEA : 112013054 Fairfield Area SD

Printed 1/4/2022 9:35:23 AM

	(PRINCIPAL AMOUNTS ONLY)							
<u>GOVERNMENTAL FUNDS/ ACTIVITIES</u>	Short-Term Borrowing	General Obligation Bonds/Notes	Authority Building Obligations	Other Long-Term Debt	Other Post- Employment Benefits (OPEB)	Compensated Absences	Net Pension Liability	Total
1. Debt at Beginning of Fiscal Year		25,690,000.00		39,399.25	2,161,712.00	103,834.00	23,204,752.00	51,199,697.25
2. Additional Debt Incurred During Year		11,070,000.00		152,406.00		21,170.00		11,243,576.00
3. Retirements and Repayments		13,250,000.00		46,421.00	346,139.00		623,155.00	14,265,715.00
4. Debt at End of Fiscal Year		23,510,000.00		145,384.25	1,815,573.00	125,004.00	22,581,597.00	48,177,558.25
5. Accreted Interest at End Of Fiscal Year								
6. Total Debt and Accreted Interest		23,510,000.00		145,384.25	1,815,573.00	125,004.00	22,581,597.00	48,177,558.25
7. Current Portion P&I - Due within 1 year		1,802,183.00		27,231.00		46,716.00		1,876,130.00
8. Interest Paid during current fiscal year		810,894.00						810,894.00

(PRINCIPAL AMOUNTS ONLY)								
<u>PROPRIETARY FUNDS</u>	Short-Term Borrowing	General Obligation Bonds/Notes	Authority Building Obligations	Other Long-Term Debt	Other Post- Employment Benefits (OPEB)	Compensated Absences	Net Pension Liability	Total
1. Debt at Beginning of Fiscal Year					36,814.00	9,905.00	509,248.00	555,967.00
2. Additional Debt Incurred During Year						742.00	19,763.00	20,505.00
3. Retirements and Repayments					9,140.00			9,140.00
4. Debt at End of Fiscal Year					27,674.00	10,647.00	529,011.00	567,332.00
5. Accreted Interest at End Of Fiscal Year								
6. Total Debt and Accreted Interest					27,674.00	10,647.00	529,011.00	567,332.00
7. Current Portion P&I - Due within 1 year						1,508.00		1,508.00
8. Interest Paid during current fiscal year								

LEA : 112013054 Fairfield Area SD

Printed 1/4/2022 9:35:23 AM

Total Principal and Interest Payments Made by Your School - All Funds

Function	Fund		Principal (910)	Principal (920)	Interest (830)	Total (Principal +Interest)	Misc Other Uses (990)
5110	10	General Fund	905,979.00		810,894.00	1,716,873.00	
5110	20	Special Revenue Funds					
5110	30	Capital Projects Funds					
5110	40	Debt Service Fund					
5110	90	Permanent Fund					
5120	10	General Fund	12,492,228.00			12,492,228.00	
5120	20	Special Revenue Funds					
5120	30	Capital Projects Funds					
5120	40	Debt Service Fund					
Total Debt Payments - Governmental Funds			\$13,398,207.00		\$810,894.00	\$14,209,101.00	
Function	Fund		Principal (910)	Principal (920)	Interest (830)	Total (Principal +Interest)	
5110	50	Enterprise Fund					
5110	60	Internal Service Fund					
5120	50	Enterprise Fund					
5120	60	Internal Service Fund					
Total Debt Payments - Proprietary Funds							

LEA : 112013054 Fairfield Area SD

Printed 1/4/2022 9:35:23 AM

Debt Details
Governmental Funds/ Activities

Debt Category	Debt Issue Date (MM/YYYY)	Principal Amounts Only				Current Portion Due Within One Year (Principal and Interest)	Interest Paid During Fiscal Year
		Debt at Beginning of Fiscal Year	Additions	Reductions / Repayments	Debt at End of Fiscal Year		
General Obligation Bonds/Notes – CIB	03/2020		11,070,000.00	5,000.00	11,065,000.00	408,650.00	387,361.00
General Obligation Bonds/Notes – CIB	02/2019	645,000.00			645,000.00	26,123.00	26,123.00
General Obligation Bonds/Notes – CIB	02/2019	9,960,000.00			9,960,000.00	415,010.00	350,010.00
General Obligation Bonds/Notes – CIB	04/2016	2,720,000.00		880,000.00	1,840,000.00	952,400.00	47,400.00
General Obligation Bonds/Notes – CIB	05/2014	6,165,000.00		6,165,000.00			
General Obligation Bonds/Notes – CIB	05/2012	3,970,000.00		3,970,000.00			
General Obligation Bonds/Notes – CIB	05/2012	2,230,000.00		2,230,000.00			
Other Long Term Debt/Liabilities		39,399.25	152,406.00	46,421.00	145,384.25	27,231.00	
Compensated Absences		103,834.00	21,170.00		125,004.00	46,716.00	
Other Post-Employment Benefits (OPEB)		2,161,712.00		346,139.00	1,815,573.00		
Net Pension Liability		23,204,752.00		623,155.00	22,581,597.00		
Totals for Debt Entered:		\$51,199,697.25	\$11,243,576.00	\$14,265,715.00	\$48,177,558.25	\$1,876,130.00	\$810,894.00

Bond Details
Proprietary Funds

Debt Category	Debt Issue Date (MM/YYYY)	Principal Amounts Only				Current Portion Due Within One Year (Principal and Interest)	Interest Paid During Fiscal Year
		Debt at Beginning of Fiscal Year	Additions	Reductions / Repayments	Debt at End of Fiscal Year		
Compensated Absences		9,905.00	742.00		10,647.00	1,508.00	
Other Post-Employment Benefits (OPEB)		36,814.00		9,140.00	27,674.00		
Net Pension Liability		509,248.00	19,763.00		529,011.00		
Totals for Debt Entered:		\$555,967.00	\$20,505.00	\$9,140.00	\$567,332.00	\$1,508.00	

LEA : 112013054 Fairfield Area SD

Printed 1/4/2022 9:35:25 AM

General Fund (10)

Section 1: Tuition/Purchased Services as Reported within Expenditure Detail	Amount
Tuition Reported in General Fund Expenditures 1000-560	1,083,974.84
Purchased Services in General Fund Expenditures 1000-594 and 1000-597	
Section 1 Total	\$1,083,974.84

Section 2: Tuition Paid to Institution Types During Fiscal Year	Tuition Paid For Nonspecial Education	Tuition Paid For Special Education	Total
1 1306 Institutions	35,409.48		35,409.48
2 Institutionalized Children's Programs			
3 Juveniles Incarcerated in Adult Facilities			
4 Residential Treatment Facilities			
5 Other Local Education Agencies	25,156.61	147,432.05	172,588.66
6 Brick and Mortar Charter Schools	158,219.82		158,219.82
7 Cyber Charter Schools	561,245.27	(1,306.54)	559,938.73
8 Career and Technology Centers	145,818.14		145,818.14
9 Approved Private Schools			
10 PA Chartered Schools for the Deaf and Blind			
11 Private Residential Rehabilitative Institutions			
12 Juvenile Detention Centers			
13 Special Program Jointures			
14 Other Tuition Not Included Elsewhere In This Section	12,000.01		12,000.01
Section 2 Total	\$937,849.33	\$146,125.51	\$1,083,974.84

LEA : 112013054 Fairfield Area SD

Printed 1/4/2022 9:35:30 AM

Fund	School	School Number	Local Personnel	Local Nonpersonnel	State Personnel	State Nonpersonnel	Federal Personnel	Federal Nonpersonnel	Total	Explanation
10										
	Fairfield Area El Sch	6270	586,051.17	604,197.16	2,344,204.66	604,197.16	185,919.00	4,847.70	4,329,416.85	
	Fairfield Area HS	6269	1,104,259.29	531,514.97	1,656,388.93	797,272.45			4,089,435.64	
	Fairfield Area MS	7322	1,422,574.16	531,514.97	1,338,074.06	138,261.07			3,430,424.26	
Total			3,112,884.62	1,667,227.10	5,338,667.65	1,539,730.68	185,919.00	4,847.70	11,849,276.75	